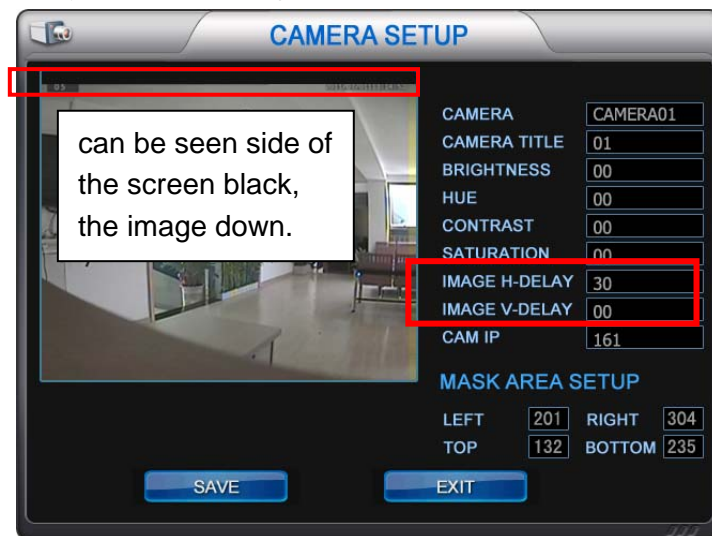


NVR some functions manual

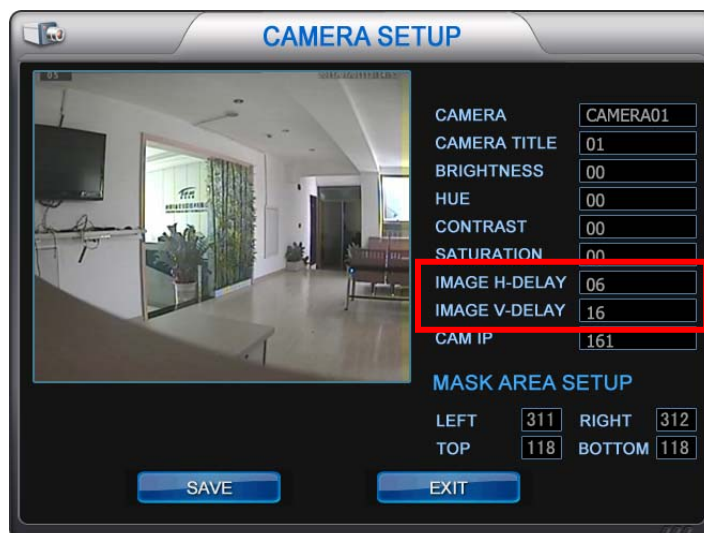
1.	Move image to centre	2
2.	Time modify	2
3.	Camera title modify	3
4.	Mask area setup	4
5.	Record before alarm and record after alarm	5
6.	Record setup	5
7.	Record status.....	6
8.	Playback	6
9.	Backup.....	6
10.	Hard disk status	7
11.	Loglist.....	8
12.	User authority.....	8
13.	One remoter control multi NVR	9
14.	PTZ control.....	9

1. Move image to centre

In camera setup menu, you can move image on vertical or horizontal direction:

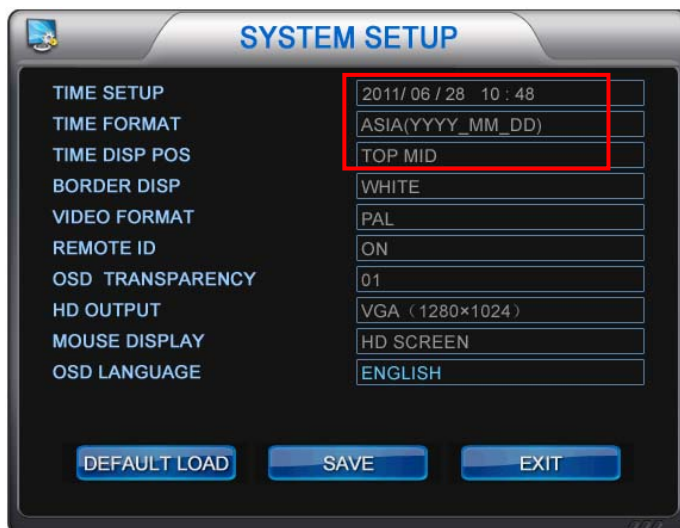


After image move,



2. Time modify

In system setup menu, date and time format, display position can be changed, also you can close time display, but record image and network image can't close the time display.



3. Camera title modify

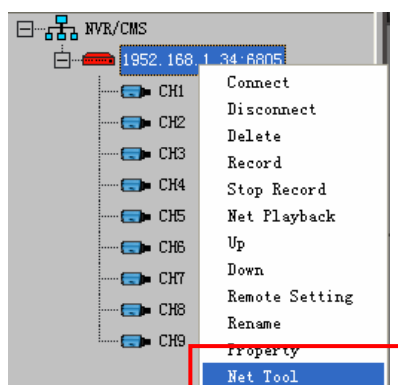


Press "Enter" key on panel

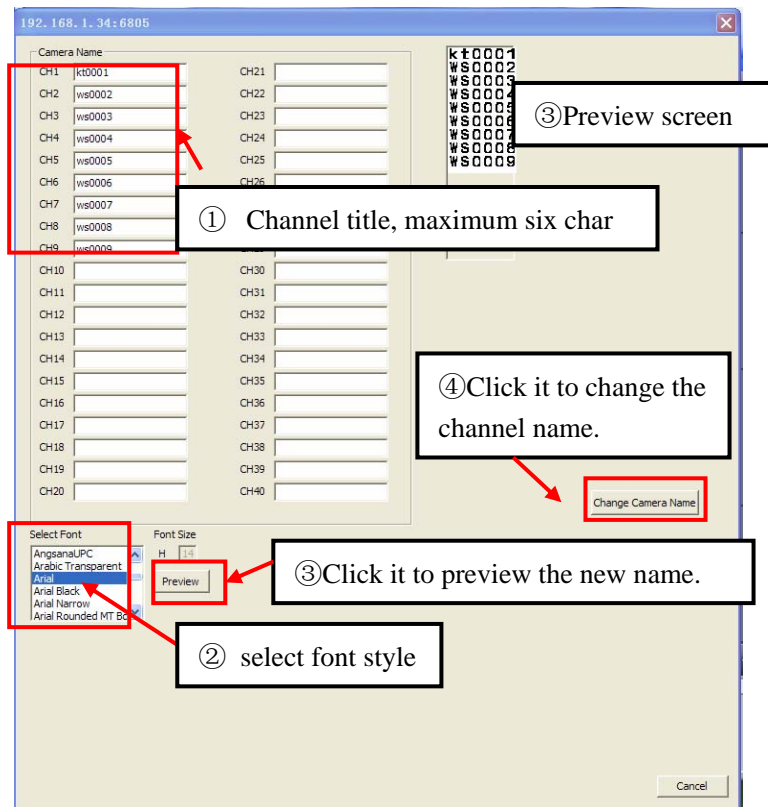
1. Bitmap channel title

In local network, open client software on PC, use ADMIN0 to login NVR.

- Right click the IP, select net tool.



- Bitmap title input like below.

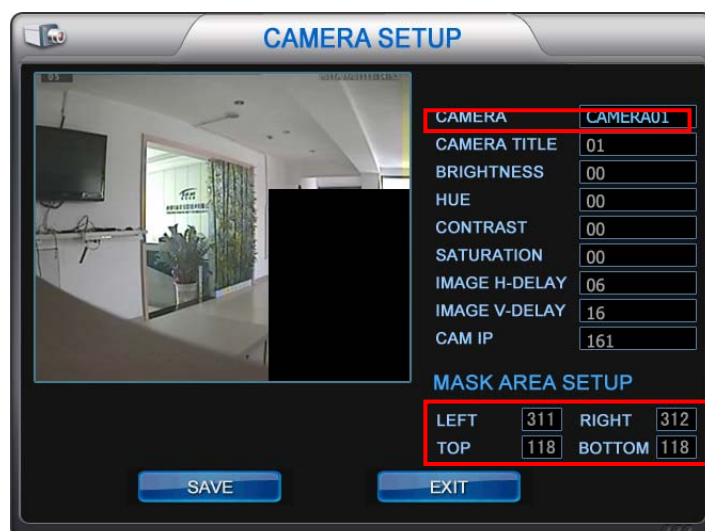


After changed here, please enter into "thecamera setup" menu in the NVR, and then change the camera name as " bitmap", you could see the new channel name on the live screen of the NVR.



4. Mask area setup

Use black rectangle to hide some area, preview, record, network all will be cover.



You can use mouse to drag a black rectangle or change area setup value.

5. Record before alarm and record after alarm

NVR will auto record before alarm occur 3 to 5 seconds, after alarm stop 4 to 6 seconds, record will stop, if alarm continue, NVR will keep record.

6. Record setup











(1) Resolution: CIF resolution is 352×288 for PAL and 352×240 for NTSC. D1 resolution is 720×576 for PAL and 720×480 for NTSC. After change resolution and save, system will reboot auto.

(2) Quality: the higher video quality, the larger occupied HDD space.


(3) Frame rate: real time is 25 frame for PAL and 30 frame for NTSC.

(4) Audio: you can select record audio or not.

7. Record status

Mark	Color	Status
	Red M	Motion record.
	Red S	Sensor record.
	Red L	Image loss and record.
	Red T	Time record.
	Green I	Waiting for record trigger.
	Green L	Image loss and not record.
	Yellow ?	Record not start, you need press record key.
	Yellow L	Record not start and image loss.


8. Playback

Click “” to enter “search menu”, in search menu, select playback channel , You could select four channels to playback simultaneously, Adjusting date and time to playback.



You can pause playback, press” FAST” key to play one frame by one frame.

9. Backup

Click “” to enter search menu.



- **Select backup device**

USB disk or CD DVD 1.5G can be select

If NVR can't find USB disk, you can enter "disk management" menu to format USB disk.



- Select backup channel.
- Select backup date and time, you can use mouse to drag the point to change backup start time and end time.
- Calculate backup size.

Note : USB hard disk can't use to backup,system will use this disk to record, not for backup.

10. Hard disk status

Press info key, to pop up a tool menu on the top right of screen.



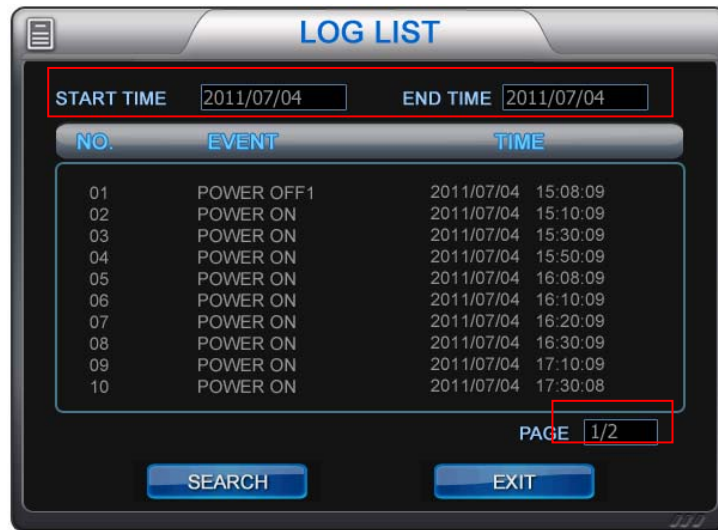
: mean all hard disk is full.



: no hard disk found.

11. Loglist

Press “info” key three times, to pop up “loglist” menu:



12. User authority

In system menu, click User setup, it will popup login menu, enter Administrator password, then user setup menu will appear.



(1) User name: default is ADMIN0、USER01、USER02、USER03、

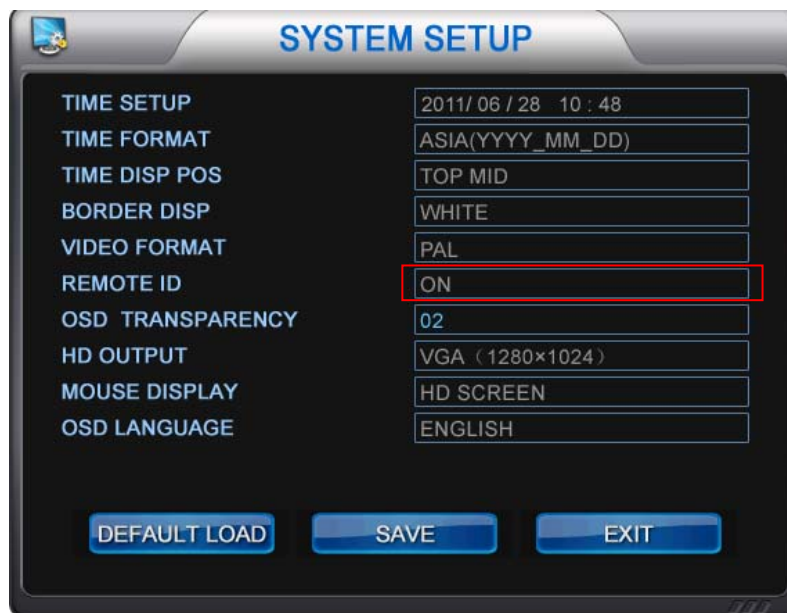
ADMIN0 is administrator.

(2) Password: default is ADMIN0: 000000,USER01: 111111, USER02: 222222,USER03: 333333.

(3) Function limit select.

Click "LOCK" on top right corner,or press "ESC" several times, "LOCK" become red, and "LOCK" led on the panel is lightened, NVR is locked, all key is locked, but press "ESC" can popup login menu, you can select user and input password to enter system.

13. One remoter control multi NVR



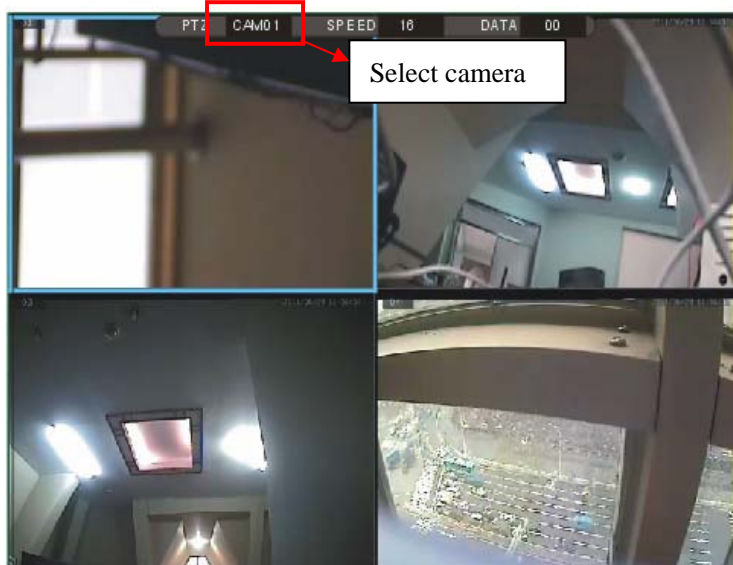
If remoter ID set to ON, IR led on panel will be lightened, remoter status become blue on top right corner. If remoter ID is 2, remoter panel press IR and 2, this NVR remoter receiver will be enable, other NVR remoter receiver will be disable, if remoter receiver is disable, IR led on panel will be turned off and remoter status become red on top right corner.

14. PTZ control

(1) PTZ parameter can be set in PTZ setup menu



(2) In live mode, press PTZ key on remoter or mouse select PTZ to enter PTZ control interface.



Key	Function	Describe
	direction	Direction icon. Control the camera to turn up, down, left, and right.
	AUTO	Control the dome camera to rotate automatically. Click the icon again to stop it.
	zoom	Zoom icon. Control the focal distance of zoom
	preview	Preview preset key.
	preset	Watch point Preset key.
	exit	Shut off PTZ menu. And exit from PTZ control.

Move speed can change by speed data.