



Quick Start Guide

(EN/DE)

Create a Smarter & Safer World

CONTENTS

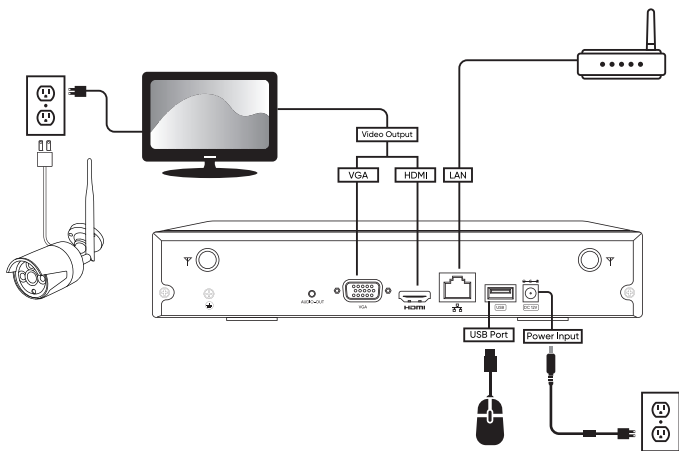
EN

1. Connection Diagram	01
2. Setup Wizard	02
3. System Settings	05
4. Remote Access	10

DE

1. Anschlussdiagramm	12
2. Setup Assistent	13
3. Systemeinstellungen	16
4. Fernzugriff	21

1. Connection Diagram

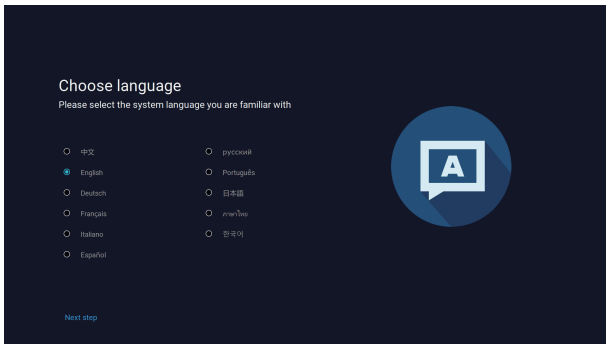


Note: The connection diagram is for reference only, please refer to the actual product.

2. Setup Wizard

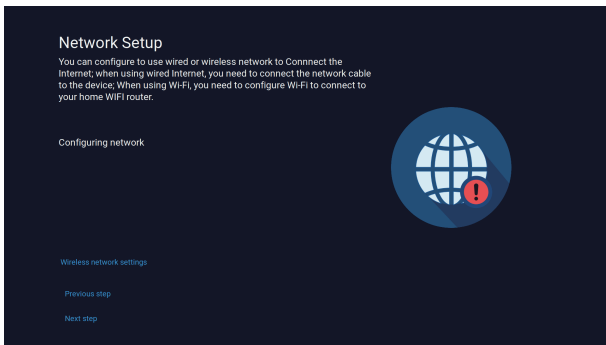
2.1 Language Settings

Select the language and click **[Next step]**.



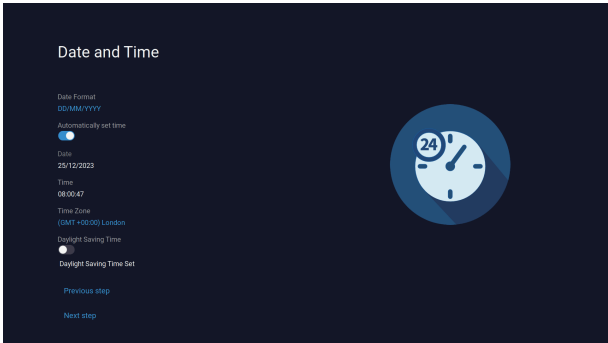
2.2 Network Setup

Connect the NVR to the router with a network cable or configure WiFi information click **[Next step]**.



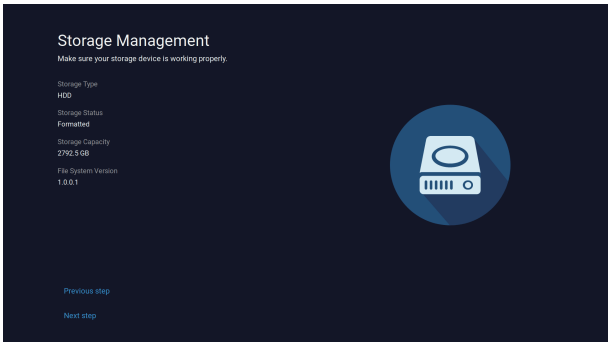
2.3 Date and Time Settings

Setting the time format and time zone and click **[Next step]**.



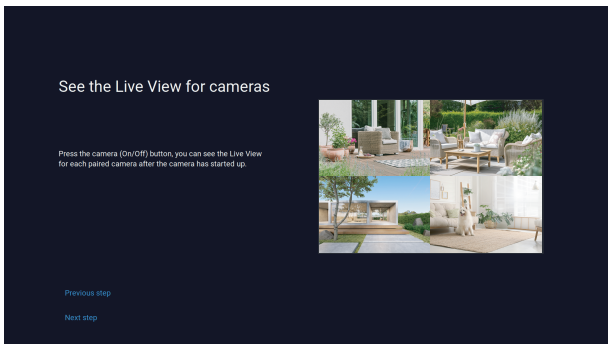
2.4 Storage Management

Make sure your storage device is working properly and click **[Next step]**.



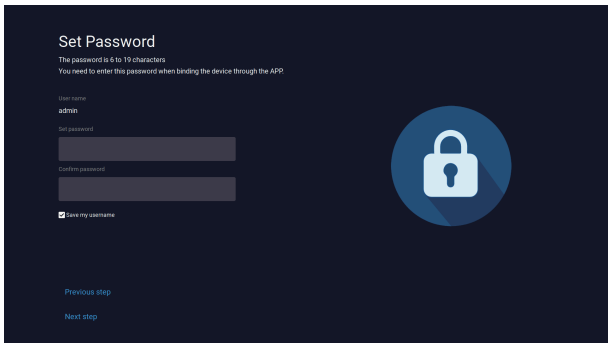
2.5 Camera screen preview

Preview the camera's live view and click **[Next step]**.



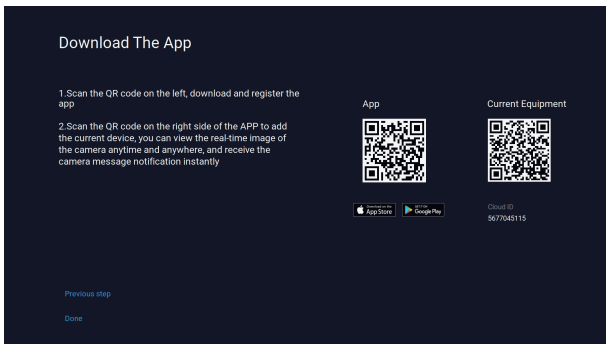
2.6 Set Password

Set your system password and click **[Next step]**.



2.7 Download APP

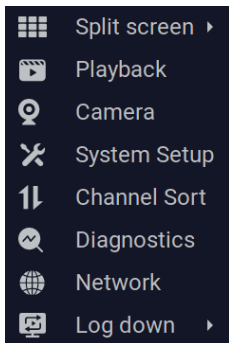
APP download link and device ID QR code, and click **[Done]** to complete the setup wizard.



3. System Settings

3.1 Quick Menu

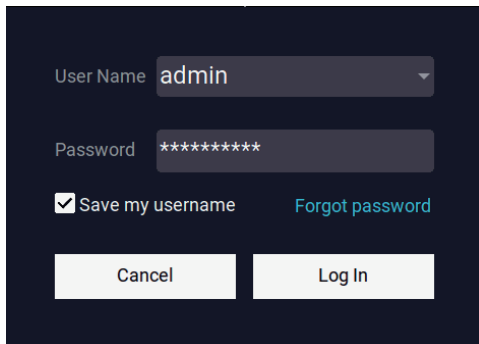
Right-click the mouse to open the Quick Menu



- [Split Screen]:** Split video channels
- [Playback]:** Play back the recorded videos
- [Camera]:** Camera Setup
- [System Setup]:** Configure the system
- [Channel Sort]:** Camera Channel Adjustment
- [Diagnostics]:** Camera Connection Status
Diagnostics
- [Network]:** Network service configuration
- [Log down]:** Log out of the system

3.2 Login the System

Click on **[Log in]** to enter the system.



User Name

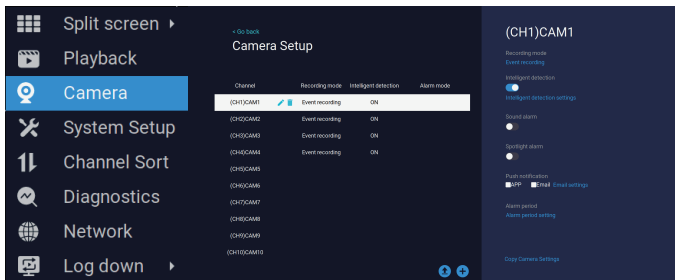
Password

Save my username [Forgot password](#)

3.3 Video Detection Setup

In default, the motion detection is enabled 24/7 and for all areas. If you want to change the motion detection mode, please re-configure the system.

Right click the mouse. Click **[Camera]-[Intelligent detection settings]** to setup the appropriate sensitivity level, the motion detection period and areas.



Split screen ▶

Playback

Camera

System Setup

Channel Sort

Diagnostics

Network

Log down ▶

Go back

Camera Setup

Channel	Recording mode	Intelligent detection	Alarm mode
(CH1)CAM1	Event recording	ON	
(CH2)CAM2	Event recording	ON	
(CH3)CAM3	Event recording	ON	
(CH4)CAM4	Event recording	ON	
(CH5)CAM5			
(CH6)CAM6			
(CH7)CAM7			
(CH8)CAM8			
(CH9)CAM9			
(CH10)CAM10			

(CH1)CAM1

Recording mode
Event recording

Intelligent detection
ON
Intelligent detection settings

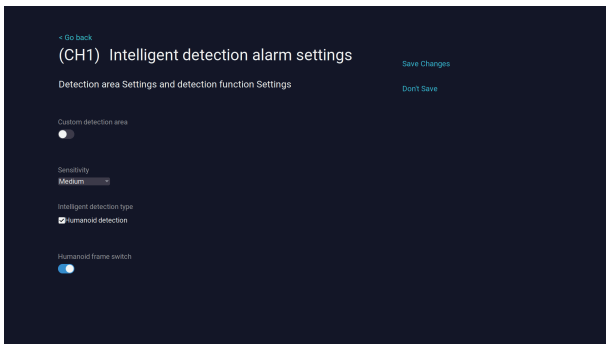
Sound alarm
OFF

Spotlight alarm
OFF

Push notification
APP Email Email settings

Alarm period
Alarm period setting

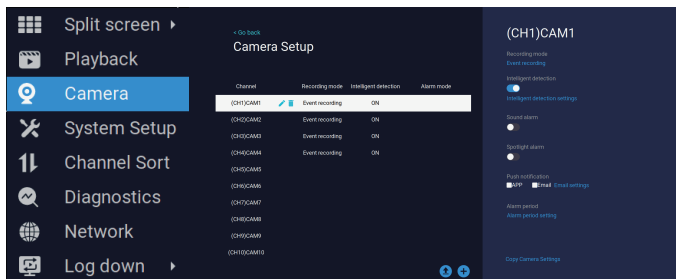
Copy Camera Settings

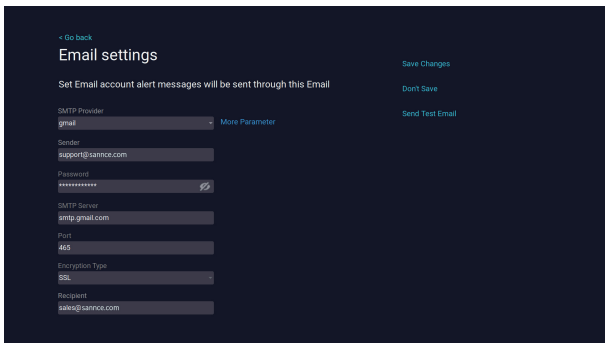


Note : If you need APP and email alarm notifications, connect your device to the Internet and enable " APP " and " Email " push notifications.

3.4 E-Mail Settings

Right click the mouse. Click **[Camera]-[Email settings]**, enter your email information, click **[Save Changes]** to save.





3.5 Video Playback

Click the right mouse button and click **[Playback]**. The system playback the earliest video of the day by default.

You can drag the video timeline to playback the video or speed up the video playback.



3.6 Add wireless camera

Right-click the mouse and click **[Camera]**, click **[+]** to make sure the new camera has been started normally, click **[Continue]** to enter the camera adding interface, the NVR will automatically search for and add the new camera nearby, and after it shows that it has been added successfully, click **[Continue]** to enter the Preview interface, and click **[Continue]** to exit.

Split screen ▶

Playback

Camera

System Setup

Channel Sort

Diagnostics

Network

Log down ▶

< Go back

Camera Setup

Channel	Recording mode	Intelligent detection	Alarm mode
(CH1)CAM1	Event recording	ON	
(CH2)CAM2	Event recording	ON	
(CH3)CAM3	Event recording	ON	
(CH4)CAM4	Event recording	ON	
(CH5)CAM5			
(CH6)CAM6			
(CH7)CAM7			
(CH8)CAM8			
(CH9)CAM9			
(CH10)CAM10			

(CH1)CAM1

Recording mode
Event recording

Intelligent detection

Intelligent detection settings

Sound alarm

Spotlight alarm

Push notification
 APP Email Email settings

Alarm period
Alarm period setting

Copy Camera Settings

< Go back

Searching for Cameras...

The table lists all paired cameras. DO NOT click 'Continue' until all cameras are listed.

Channel	Device Name	IP Address	Status
1	5323-W6	172.20.14.30	Connect success
2	5323-W6	172.20.14.31	Connect success
3	5323-W6	172.20.14.32	Connect success
4	5323-W6	172.20.14.33	Connect success
5	5323-3W	172.20.14.34	Connect success

Continue

Note: If the camera cannot be found, reset the camera and try again. Or connect the camera to the NVR through a network cable, and then try to add.

4. Remote Access

Before you access the NVR system remotely, make sure the NVR is connected to the Internet.

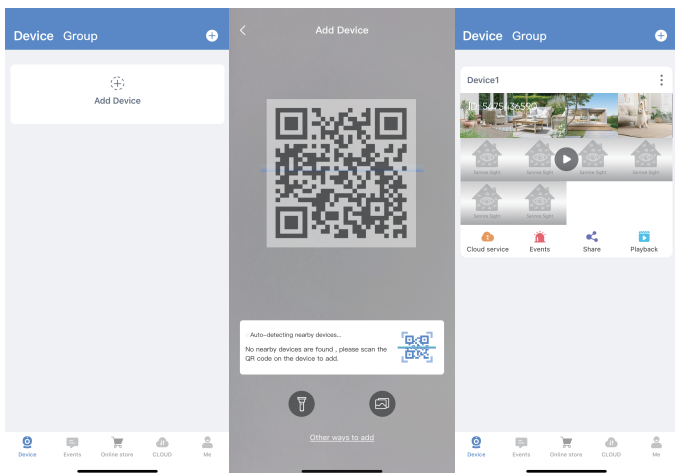
4.1 Access the System via Mobile Phones

Download and install the free " **Sannce Sight** " from the Google Play Store or App Store, create an account and login.

Click the " **Add Device** " or " + " icon, operate according to the prompts on the APP interface and complete adding the device.



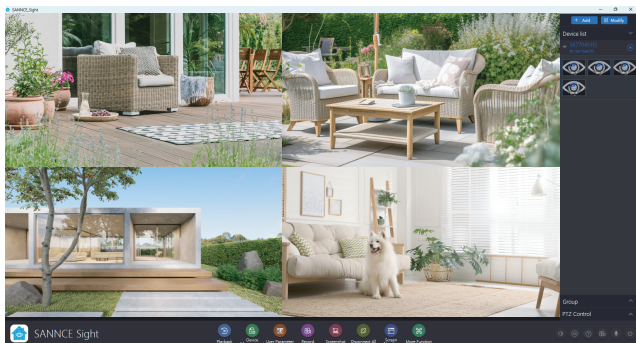
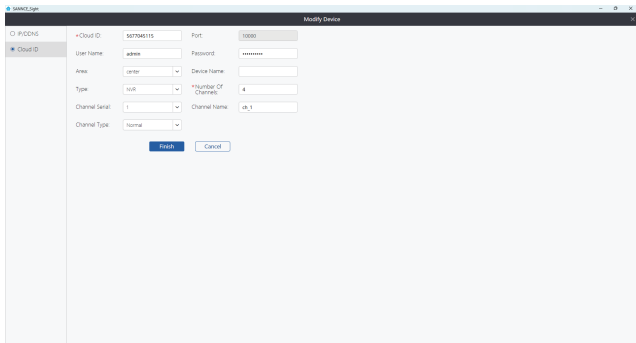
APP: Sannce Sight



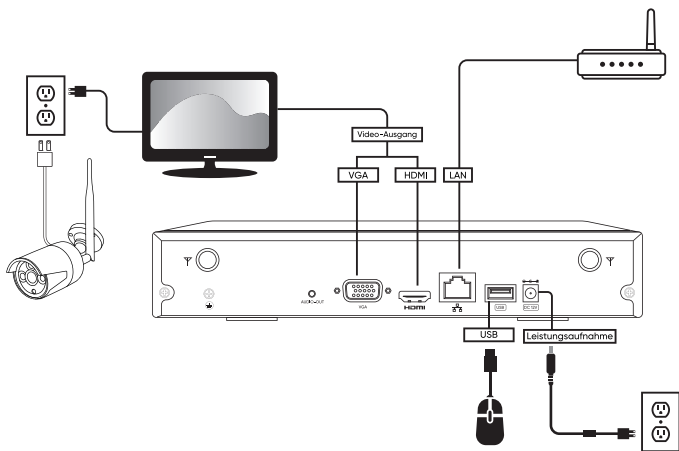
4.2 Access the System via Computers

Step 1. Install " **Sannce Sight** " client on your computer,

Step 2. Launch the client and log into your account . Click " **Add** " and then enter the ID, username, password, the device type, and the device channel to add the device. Click " **Finish** ".



1. Anschlussdiagramm

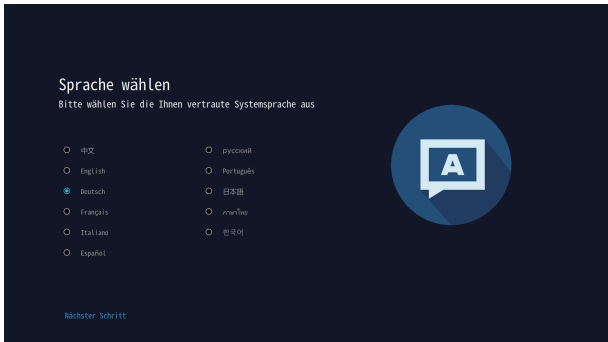


Hinweis: Das Anschlussdiagramm dient nur als Referenz. Bitte beziehen Sie sich auf das tatsächliche Produkt.

2. Setup Assistent

2.1 Spracheinstellungen

Wählen Sie die Sprache und klicken Sie auf **[Nächster Schritt]**.



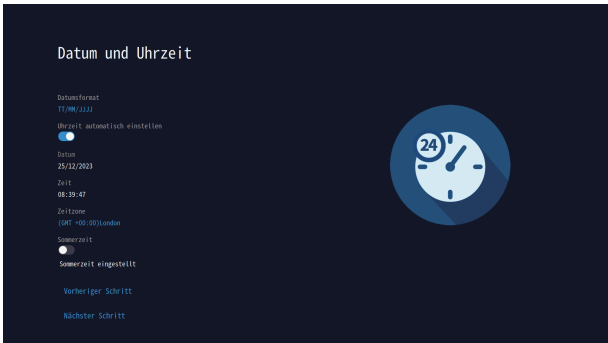
2.2 Netzwerkeinrichtung

Verbinden Sie den NVR über ein Netzwerkkabel mit dem Router oder konfigurieren Sie die WiFi-Informationen und klicken Sie auf **[Nächster Schritt]**.



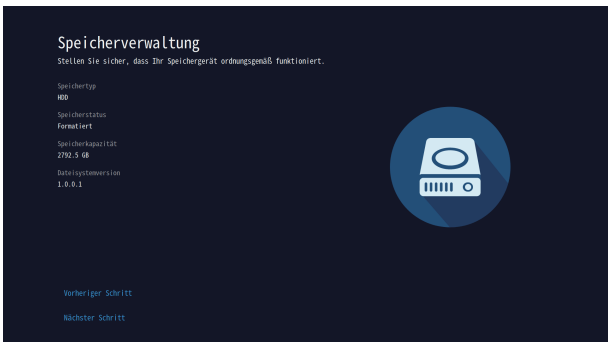
2.3 Einstellungen für Datum und Uhrzeit

Stellen Sie das Zeitformat und die Zeitzone ein und klicken Sie auf **[Nächster Schritt]**.



2.4 Speicherverwaltung

Vergewissern Sie sich, dass Ihr Speichergerät ordnungsgemäß funktioniert, und klicken Sie auf **[Nächster Schritt]**.



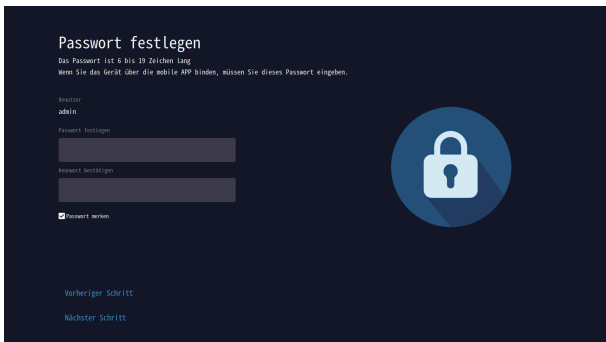
2.5 Vorschau des Kamerabildschirms

Zeigen Sie eine Vorschau der Live-Ansicht der Kamera an und klicken Sie auf **[Nächster Schritt]**.



2.6 Passwort festlegen

Legen Sie Ihr Systempasswort fest und klicken Sie auf **[Nächster Schritt]**.



2.7 APP herunterladen

APP-Download-Link und Geräte-ID-QR-Code, und klicken Sie auf **[Fertig]**, um den Einrichtungsassistenten abzuschließen.



3. Systemeinstellungen

3.1 Schnellmenü

Klicken Sie mit der rechten Maustaste, um das Schnellmenü zu öffnen



[Trennen]: Videokanäle teilen

[Wiedergabe]: Wiedergabe der aufgenommenen Videos

[Kamera]: Kameraeinstellung

[System]: Konfigurieren Sie das System

[Sortieren]: Anpassung des Kamerakanals

[Diagnose]: Diagnose des Kameraverbindungsstatus

[Netzwerk]: Netzwerkdienst-Konfiguration

[Abmelden]: Aus dem System abmelden

3.2 Anmeldung im System

Klicken Sie auf **[Einloggen]**, um das System zu betreten.

Benutzer: admin

Passwort: *****

Passwort merken [Passwort vergessen](#)

3.3 Videodetektion einrichten

Standardmäßig ist die Bewegungserkennung 24/7 und für alle Bereiche aktiviert. Wenn Sie den Bewegungserkennungsmodus ändern möchten, konfigurieren Sie das System bitte neu.

Klicken Sie mit der rechten Maustaste. Klicken Sie auf **[Kamera]-[Intelligente Erkennungseinstellungen]**, um die entsprechende Empfindlichkeitsstufe, den Bewegungserkennungszeitraum und die Bereiche einzustellen.

Trennen | **Wiedergabe** | **Kamera** | **System** | **Sortieren** | **Diagnose** | **Netzwerk** | **Abmelden**

Kamera-Setup

Kanal	Aufnahmestatus	Erkennung	Alarmmodus
(001)CAM1	Ereignis	AK	
(001)CAM2	Ereignis	AK	
(001)CAM3	Ereignis	AK	
(001)CAM4	Ereignis	AK	
(001)CAM5			
(001)CAM6			
(001)CAM7			
(001)CAM8			
(001)CAM9			
(001)CAM10			

(CH1)CAM1

Aufholmodes: Ereignis

Erkennung: Intelligente Erkennungseinstellungen

Manueller Alarm:

Spotlight-Alarm:

Push-Benachrichtigung: Mail Host Einstellungen

Alarmmodus: Einstellung des Alarmzeitraums

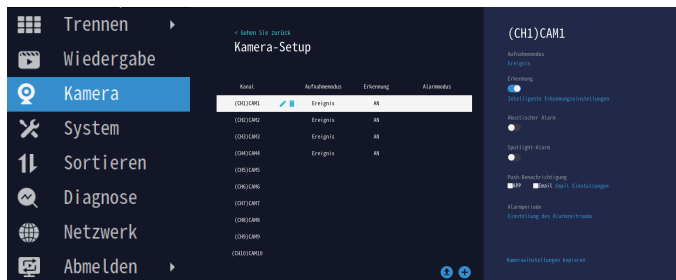
Kamerasteuerungen kopieren

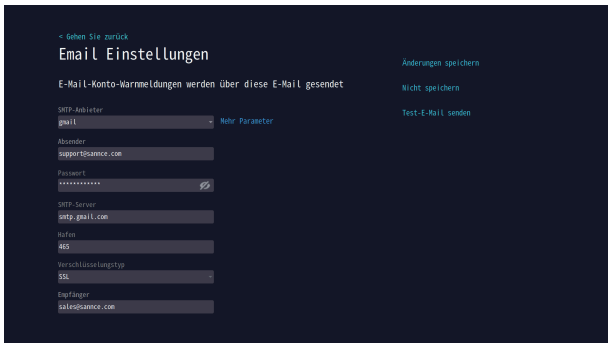


Hinweis: Wenn Sie APP- und E-Mail-Alarmbenachrichtigungen benötigen, verbinden Sie Ihr Gerät mit dem Internet und aktivieren Sie „ **APP** “ und „ **Email** “

3.4 Email-Einstellungen

Klicken Sie mit der rechten Maustaste. Klicken Sie auf **[Kamera]-[Email-Einstellungen]**, geben Sie Ihre Email-Informationen ein und klicken Sie zum Speichern auf **[Änderungen speichern]**.





3.5 Video-Wiedergabe

Klicken Sie die rechte Maustaste und auf **[Wiedergabe]**. Das System spielt standardmäßig das früheste Video des Tages ab.

Sie können die Video-Timeline nutzen, um das Video abzuspielen oder die Videowiedergabe zu beschleunigen.



3.6 Drahtlose Kamera hinzufügen

Klicken Sie mit der rechten Maustaste auf **[Kamera]**, klicken Sie auf **[+]**, um sicherzustellen, dass die neue Kamera normal gestartet wurde, klicken Sie auf **[Fortsetzen]**, um die Schnittstelle zum Hinzufügen von Kameras aufzurufen, der NVR sucht automatisch nach der neuen Kamera in der Nähe und fügt sie hinzu, und nachdem er anzeigt, dass sie erfolgreich hinzugefügt wurde, klicken Sie auf **[Fortsetzen]**, um die Vorschau-Schnittstelle aufzurufen, und klicken Sie auf **[Fortsetzen]**, um die Seite zu verlassen.

Kanal	Aufnahmestatus	Erkennung	Alarmmodus
(CH1)CAM1		Ereignis	All
(CH1)CAM2		Ereignis	All
(CH1)CAM3		Ereignis	All
(CH1)CAM4		Ereignis	All
(CH1)CAM5		Ereignis	All
(CH1)CAM6		Ereignis	All
(CH1)CAM7		Ereignis	All
(CH1)CAM8		Ereignis	All
(CH1)CAM9		Ereignis	All
(CH1)CAM10		Ereignis	All

(CH1)CAM1

Aufnahmestatus
Ereignis

Erkennung
 Ereignis
Intelligente (Erkennungseinstellungen)

Alarmmodus
 Hosttreiber Alarm
 Spotlight Alarm

Push-Benachrichtigung
 PPT Mail Smail Einstellungen

Alarmperiode
Einstellung des Alarmzeitraums

Kamerasteuerungen kopieren

< Gehen Sie zurück

Suche nach Kameras...

Die Tabelle listet alle gekoppelten Kameras auf. Klicken Sie NICHT auf „Weiter“, bis alle Kameras aufgelistet sind.

Kanal	Gerätename	IP Adresse	Status
1	5223-W6	172.20.14.30	Erfolg verbinden
2	5223-W6	172.20.14.31	Erfolg verbinden
3	5223-W6	172.20.14.32	Erfolg verbinden
4	5223-W6	172.20.14.33	Erfolg verbinden
5	5223-3W	172.20.14.34	Erfolg verbinden

Fortsetzen

Hinweis: Wenn die Kamera nicht gefunden werden kann, setzen Sie sie zurück und versuchen Sie es erneut. Oder verbinden Sie die Kamera über ein Netzwerkabel mit dem NVR und versuchen Sie dann, sie hinzuzufügen.

4. Fernzugriff

Bevor Sie aus der Ferne auf das NVR-System zugreifen, stellen Sie sicher, dass der NVR mit dem Internet verbunden ist.

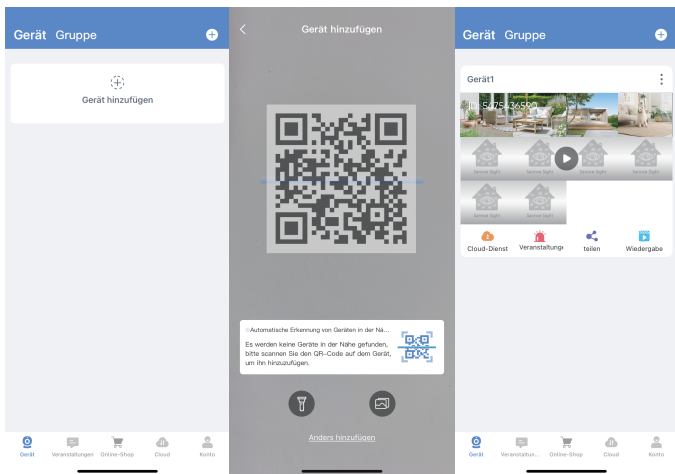
4.1 Zugriff per Smartphone

Laden Sie die kostenlose „**Sannce Sight**“ App aus dem Google Play Store oder dem App Store herunter, installieren Sie die App, erstellen Sie ein Konto und melden Sie sich an.

Klicken Sie auf das Symbol „**Gerät hinzufügen**“ oder „+“, befolgen Sie die Anweisungen auf der APP und fügen Sie das Gerät hinzu.



APP: Sannce Sight



4.2 Zugriff per Computer

Schritt 1. Installieren Sie den „**Sannce Sight**“ Client auf Ihrem Computer.

Schritt 2. Starten Sie den Client und melden Sie sich bei Ihrem Konto an . Klicken Sie auf „**Hinzuf.**“ und geben Sie anschließend die ID, den Benutzernamen, das Passwort, den Gerätetypen und den Gerätekanal ein, um das Gerät hinzuzufügen. Klicken Sie anschließend auf „**Fertig**“.

Gerät bearbeiten

Cloud ID: 5877046115 Port: 10000

Benutzername: admin Passwort: *****

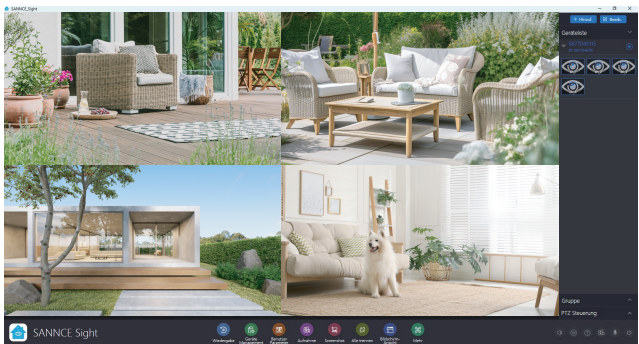
Bereich: exter Gerätebezeichnung:

Art: NVR Anzahl Kanäle: 4

serieller Kanal: 1 Kanalname: ch_1

Kanal Art: normal

Fertig Abbrechen



Production Information

Thank you for purchasing our NVR! This manual is designed for the installation and operation of this product. You can get more information about the features and functions of this product in details. Please read this manual carefully before using. Please contact us if you have any questions.

Legal Disclaimer

REGARDING TO THE PRODUCT WITH INTERNET ACCESS, THE USE OF PRODUCT SHALL BE WHOLLY AT YOUR OWN RISKS. OUR COMPANY SHALL NOT TAKE ANY RESPONSIBILITIES FOR ABNORMAL OPERATION, PRIVACY LEAKAGE OR OTHER DAMAGES RESULTING FROM CYBER ATTACK, HACKER ATTACK, VIRUS INSPECTION, OR OTHER INTERNET SECURITY RISKS; HOWEVER, OUR COMPANY WILL PROVIDE TIMELY TECHNICAL SUPPORT IF REQUIRED. SURVEILLANCE LAWS VARY BY JURISDICTION. PLEASE CHECK ALL RELEVANT LAWS IN YOUR JURISDICTION BEFORE USING THIS PRODUCT IN ORDER TO ENSURE THAT YOUR USE CONFORMS THE APPLICABLE LAW. OUR COMPANY SHALL NOT BE LIABLE IN THE EVENT THAT THIS PRODUCT IS USED WITH ILLEGITIMATE PURPOSES. IN THE EVENT OF ANY CONFLICTS BETWEEN THIS MANUAL AND THE APPLICABLE LAW, THE LATER PREVAILS.

Regulatory Information

FCC Information

This equipment has been tested and found to comply with the limits for a Class B digital device, pursuant to part 15 of the FCC Rules. These limits are designed to provide reasonable protection against harmful interference in a residential installation. This equipment generates uses and can radiate radio frequency energy and, if not installed and used in accordance with the instructions, may cause harmful interference to radio communications. However, there is no guarantee that interference will not occur in a particular installation. If this equipment does cause harmful interference to radio or television reception, which can be determined by turning the equipment off and on, the user is encouraged to try to correct the interference by one or more of the following measures:

- Reorient or relocate the receiving antenna.
- Increase the separation between the equipment and receiver.
- Connect the equipment into an outlet on a circuit different from that to which the receiver is connected.
- Consult the dealer or an experienced radio/TV technician for help.

Changes or modifications not expressly approved by the party responsible for compliance could void the user's authority to operate the equipment.

This device complies with Part 15 of the FCC Rules. Operation is subject to the following two conditions:

(1) this device may not cause harmful interference, and (2) this device must accept any interference received, including interference that may cause undesired operation.

RF Exposure Warning Statements:

This equipment complies with FCC radiation exposure limits set forth for an uncontrolled environment. This equipment shall be installed and operated with minimum distance 20cm between the radiator & body.

EU Conformity Statement



This product and - if applicable - the supplied accessories too are marked with "CE" and comply therefore with the applicable harmonized European standards listed under the EMC Directive 2004/108/EC, the RoHS Directive 2011/65/EU.



2012/19/EU (WEEE directive): Products marked with this symbol cannot be disposed of as unsorted municipal waste in the European Union. For proper recycling, return this product to your local supplier upon the purchase of equivalent new equipment, or dispose of it at designated collection points. For more information see: www.recyclethis.info



2013/56/EU (battery directive): This product contains a battery that cannot be disposed of as unsorted municipal waste in the European Union. See the product documentation for specific battery information. The battery is marked with this symbol, which may include lettering to indicate cadmium (Cd), lead (Pb), or mercury (Hg). For proper recycling, return the battery to your supplier or to a designated collection point. For more information see: www.recyclethis.info

Safety Instruction

These instructions are intended to ensure that user can use the product correctly to avoid danger or property loss. The precaution measure is divided into [Warnings] and [Cautions].

Warnings: Serious injury or death may occur if any of the warnings are neglected.

Cautions: Injury or equipment damage may occur if any of the cautions are neglected.



Warnings: Follow these safeguards to prevent serious injury or death.



Cautions: Follow these precautions to prevent potential injury or material damage.



Warnings

- Proper configuration of all passwords and other security settings is the responsibility of the installer and/or end - user.
- In the use of the product, you must be in strict compliance with the electrical safety regulations of the nation and region. Please refer to technical specifications for detailed information.
- Input voltage should meet both the SELV (Safety Extra Low Voltage) and the Limited Power Source with 100 to 240 VAC or 12 VDC according to the IEC60950 - 1 standard. Please refer to technical specifications for detailed information.
- Do not connect several devices to one power adapter as adapter overload may cause over - heat ing or a fire hazard.
- Please make sure that the plug is firmly connected to the power socket.
- If smoke, odor or noise rise from the device, turn off the power at once and unplug the power cable, and then please contact the service center.

Note:

We will update this user manual from time to time without prior notice. If you have any questions, please feel free to contact us at support@sannce.com.

Prevention and Warning Tips:

Only qualified maintenance personnel can perform equipment installation and maintenance. Please make sure to read and understand the complete manual before installation.

- Please install the equipment away from the elderly and children, so as not to cause electrical injury.
- Please ensure the safety of electricity use to avoid fire caused by current overload.
- The NVR unit is designed for indoor use only. Make sure the device is installed in a well - ventilated and dust - free environment. Keep the NVR away from liquids.
- The camera unit supports dustproof and waterproof. ideal for outdoor use. Please make sure to fix it firmly. Avoid injury from falling.
- When connecting the cable of the camera unit, please ensure that the connection is waterproof and dustproof. Inadequate links can easily damage the device.
- Before connecting and disconnecting accessories and peripheral devices, turn off the power of the device to avoid damage to the device.
- This device should use the hard disk recommended by the factory. Hard disks of different quality may cause the device to fail to record and fail to start.



For more information,
please visit:

www.sannce.com



Shenzhen Kean Digital Co., Ltd.

ADD: 10th Floor, Rujun Building, NO. 105,
The Center Road, Bantian Street, Longgang District,
Shenzhen, 518129, China

Help center: <https://support.sannce.com>

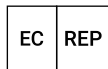
Tech Support: support@sannce.com

FCC ID: 2AKL2K44WEC

Made in China



THEMIS AR support ltd
85 Great Portland St, London, United Kingdom, W1W 7LT
legal@themisar.com



THEMIS AR Unterstützung UG
Beedstrasse 54, In Dusseldorf, (40468), Deutschland
legal@themisar.com

