



Quick Start Guide

CONTENTS

- 1. Hard Disk Installation..... 01
- 2. Connect the System..... 02
- 3. Setup Wizard..... 03
- 4. Quick Menu..... 07
- 5. System Settings..... 08
- 6. Remote Access 16

1. Hard Disk Installation

If you want to store and play back video (see following photos), a hard disk should be installed into the NVR.

Please kindly refer to the steps below to install a hard disk.

If the NVR is already installed a hard disk, please kindly skip.

Before you start: Disconnect the power from the NVR first.

Tools Required: Screwdriver.

Step 1: Unscrew the NVR and remove its cover.

Step 2: Put the hard disk into the NVR and screw it to the case tightly.

Step 3: Connect the hard drive's data cable and power cord to the NVR.

Step 4: Put on the NVR cover and fix it tightly.

Note: The steps above are just for reference.

If you have any further questions, please contact our support email :support@sannce.com



1. Remove the screw



2. Remove the cover



3. Place and fix the hard disk



4. Connect the data wire



5. Connect the power wire



6. Place the cover

7. Fix the cover

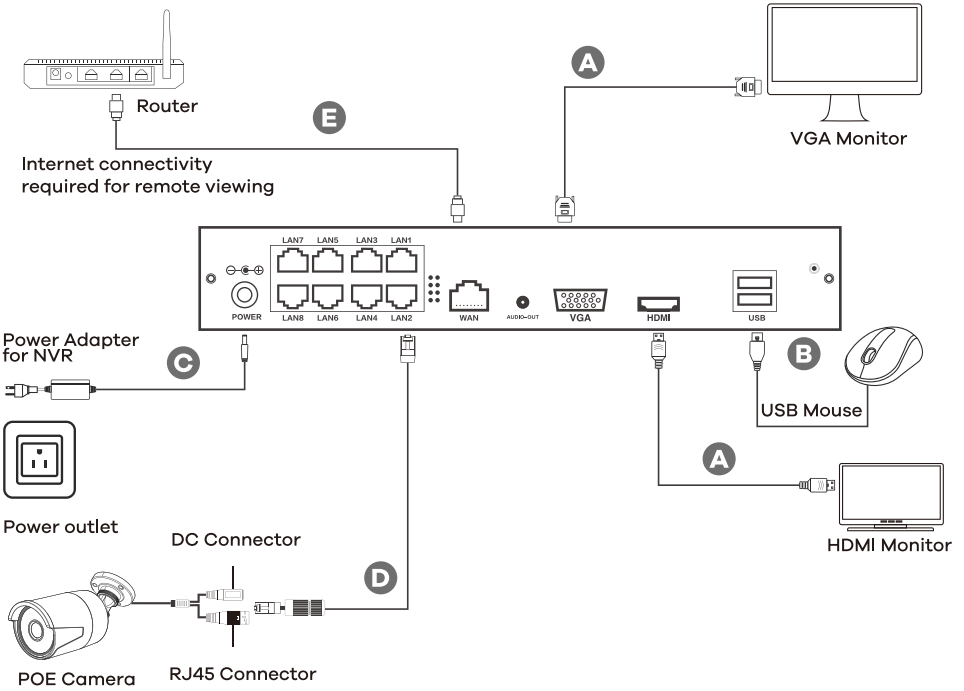
Connect the data wire and the power wire to the corresponding ports of the hard disk (see the following photos).



2. Connect the System

Please connect a monitor and a mouse to the NVR, then connect the IP camera to the PoE port of the NVR via the Ethernet cable included, and then power on the NVR. After powering the NVR, please wait for a few minutes, after that the NVR will automatically connect to the IP camera and display the live image.

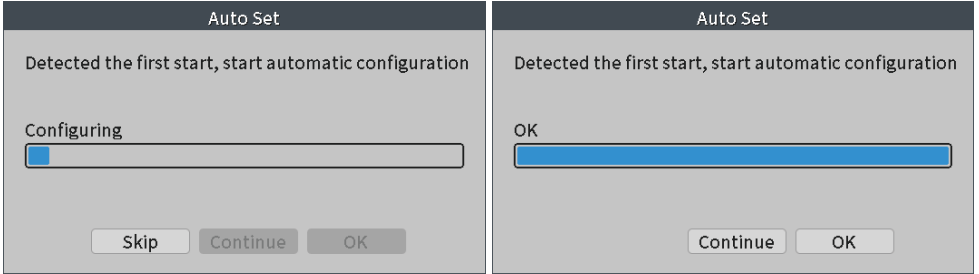
- A** Connect the monitor
- B** Connect the mouse
- C** Connect NVR to power supply
- D** Connect IPC to the POE port of NVR via network cable
- E** Connect NVR to a router



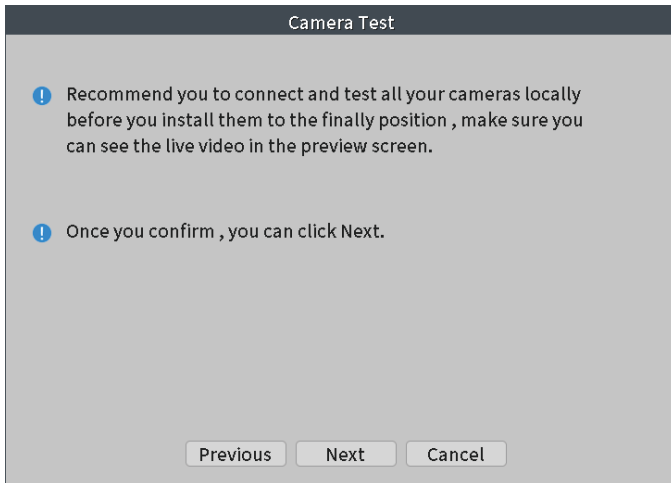
3. Setup Wizard

3.1 Auto Set

When the system starts up for the first time, it will automatically search and add cameras. After the configuration is complete, click on the **[OK]**. Please skip this step if not needed.



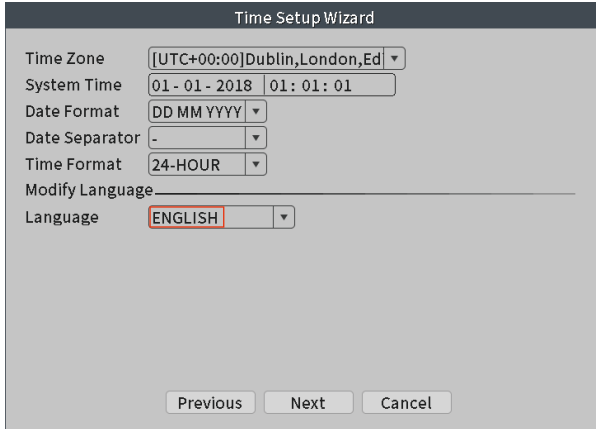
Click on the **[Next]**



3.2 Time and language settings

Set up Time Zone, System Time, Format and Modify Language, click on the **[Next]**.

Note: The device defaults to English. Please change the language that suits you. If the language is changed, the system will reboot. Please wait for the restart.



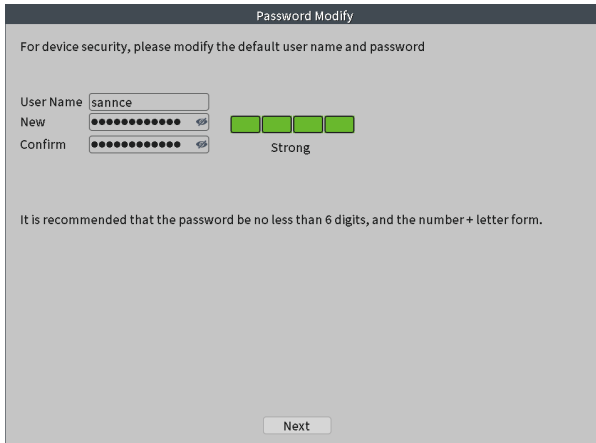
The screenshot shows a dialog box titled "Time Setup Wizard". It contains several configuration options:

- Time Zone: [UTC+00:00]Dublin,London,Ed ▾
- System Time: 01 - 01 - 2018 01 : 01 : 01
- Date Format: DD MM YYYY ▾
- Date Separator: - ▾
- Time Format: 24-HOUR ▾
- Modify Language: _____
- Language: ENGLISH ▾

At the bottom of the dialog, there are three buttons: "Previous", "Next", and "Cancel".

3.3 Password Modify

Change the default username and password of the system (please kindly keep it in mind after modifying), click on the **[Next]**.



The screenshot shows a dialog box titled "Password Modify". It contains the following text and fields:

For device security, please modify the default user name and password

User Name: sannc

New: [password field] [strength indicator: 4 green boxes]

Confirm: [password field] [strength indicator: 4 green boxes]

Strong

It is recommended that the password be no less than 6 digits, and the number + letter form.

At the bottom of the dialog, there is a "Next" button.

3.4 Safety Question

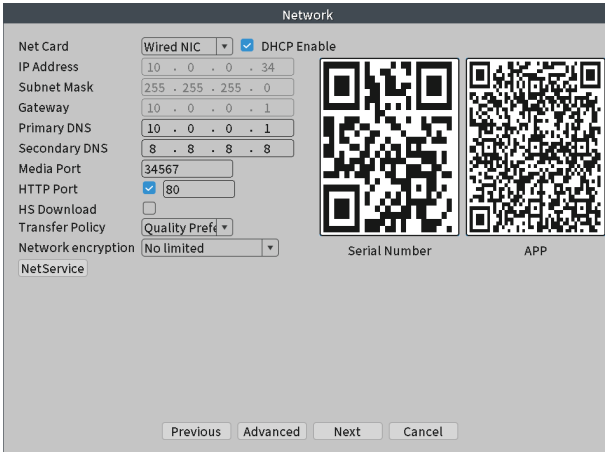
Set up safety question, verification method when resetting password (APP or Email, keep it in mind), click on the **[Next]**.

3.5 Set Pattern

Set up unlock pattern. You can skip this if you don't need it, click on the **[Skip]**.

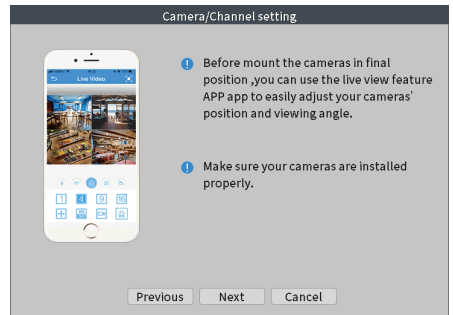
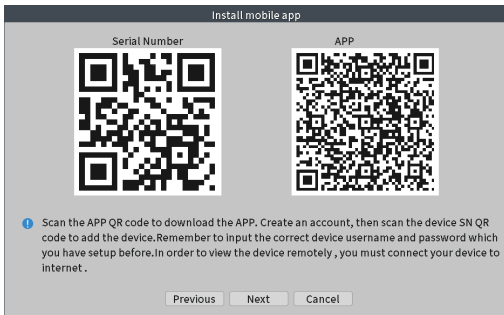
3.6 Network

Local network settings, DHCP will be enabled by default, and the NVR will automatically obtain the network information configured by the router when connected to the network, click on the **[Next]**.



3.7 QR Code

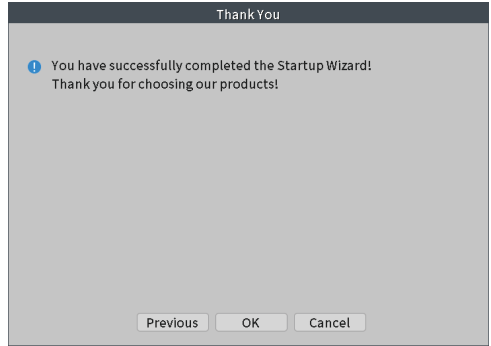
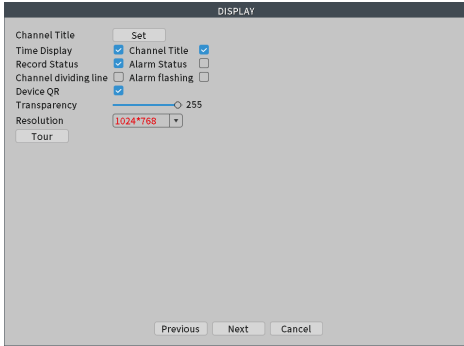
Scan the QR code to download the mobile APP, and follow the operation instruction to add, click on the **[Next]**.



3.8 Display

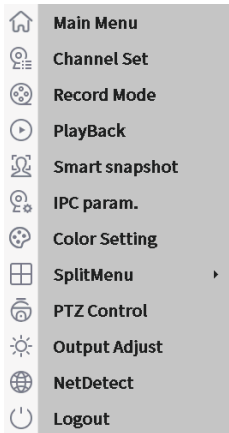
Set up the Channel Title, Time Display/Channel Title Display/Record Status Display/Alarm Status Display/device QR Display, etc., change the display output resolution, click on the **[Next]**. Click on the **[OK]** to complete the wizard.

Note: The system will restart if the display resolution is modified, please wait for the rebooting.



4. Quick Menu

Right-click the mouse to get to the quick menu.

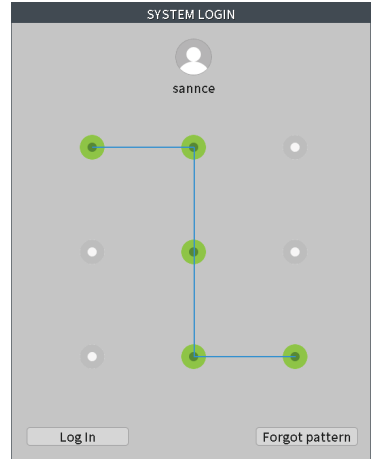
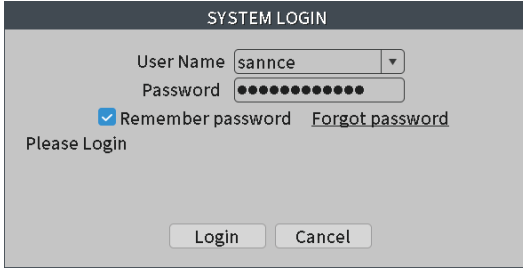


- Main Menu:** Main menu option
- Channel Set:** Camera channel management
- Record Mode:** Quickly set the recording mode
- PlayBack:** Enter recording search and playback
- Smart snapshot:** View smart screenshots (some devices do not support)
- IPC param.:** Camera parameter management
- Color Setting:** camera color settings
- SplitMenu:** Screen preview management
- PTZ Control:** PTZ function control (PTZ cameras only)
- Output Adjust:** Display output settings
- NetDetect:** Device network status detection
- Logout:** Logout, shutdown and reboot

5. System Settings

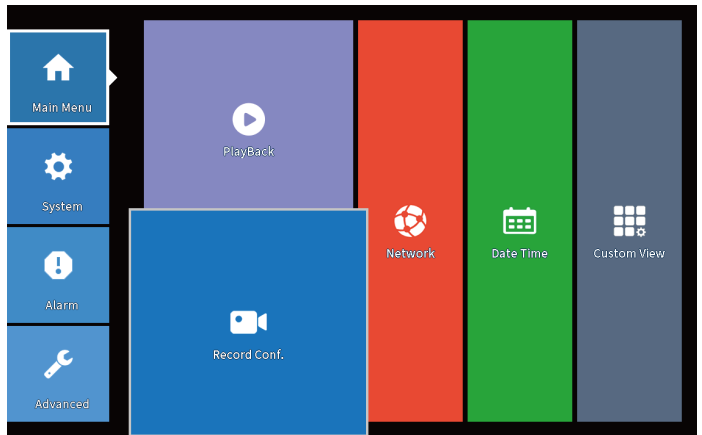
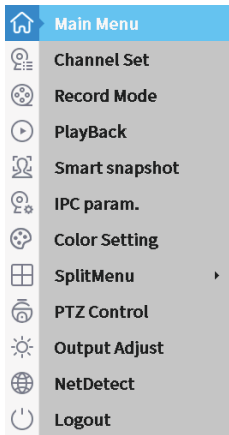
5.1 System Login

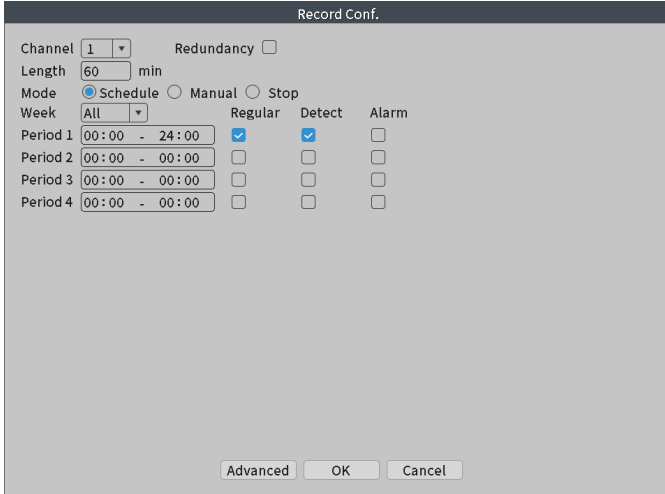
Select username and input password, or use the pattern to login.



5.2 Record Conf

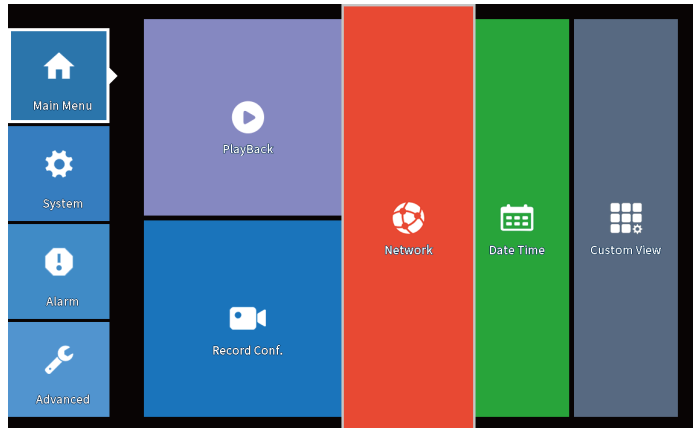
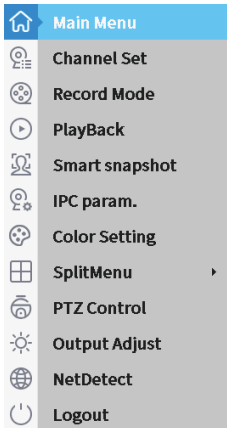
Right-click the mouse, select **[Main Menu]-[Main Menu]-[Record Conf.]**
Select the record mode and set up the time period.

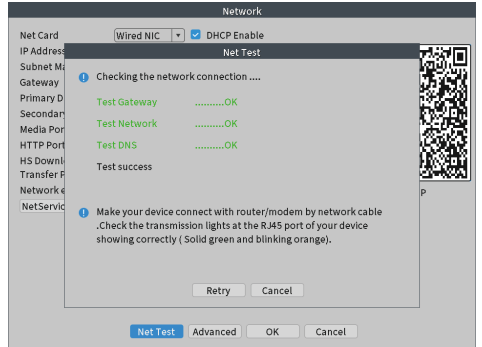
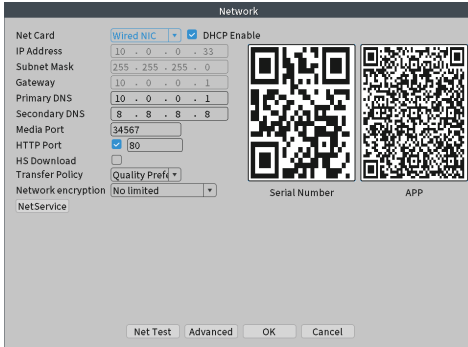




5.3 Network settings

Right-click the mouse, select **[Main Menu]-[Main Menu]-[Network]**
 Confirm or modify the local network information and test if the network is working properly.



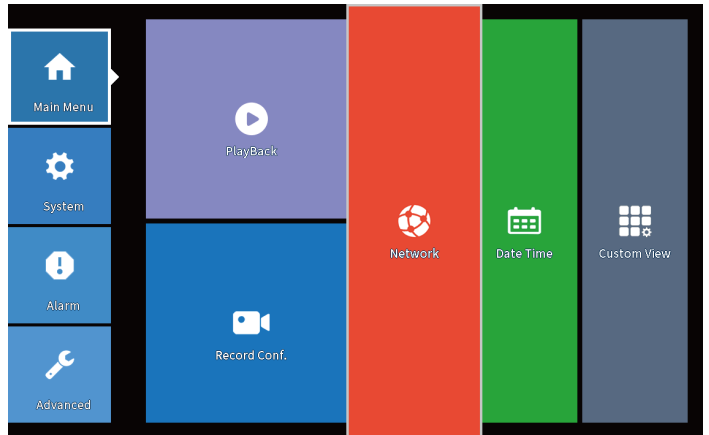
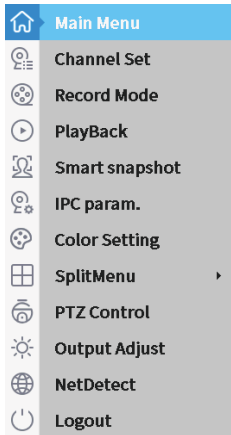


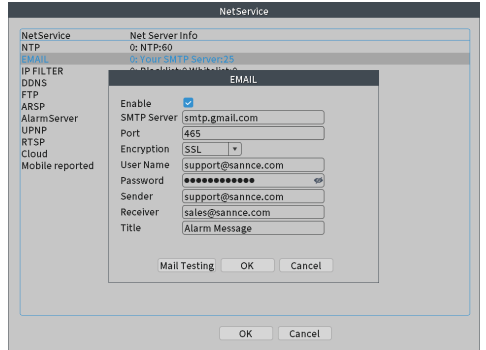
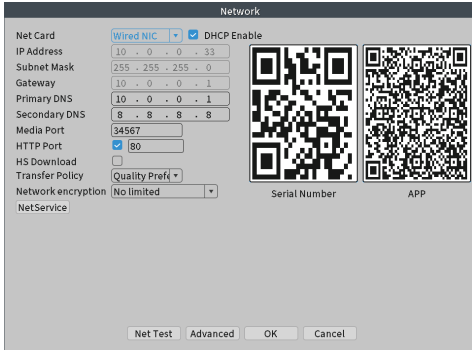
5.4 E-Mail settings

Right-click the mouse, select

[Main Menu]-[Main Menu]-[Network]-[NetService]

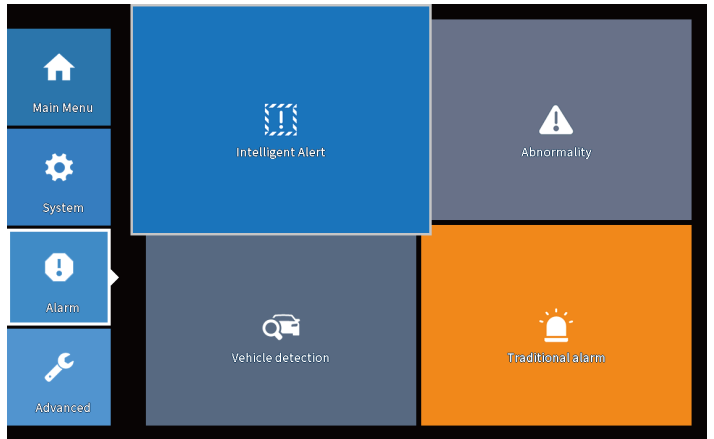
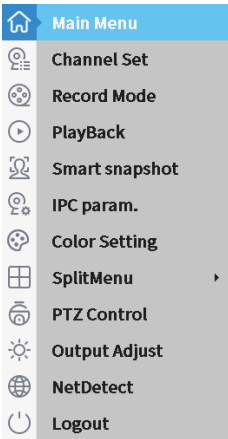
Double-click **[EMAIL]**, enter your email information, click **[OK]** to save.

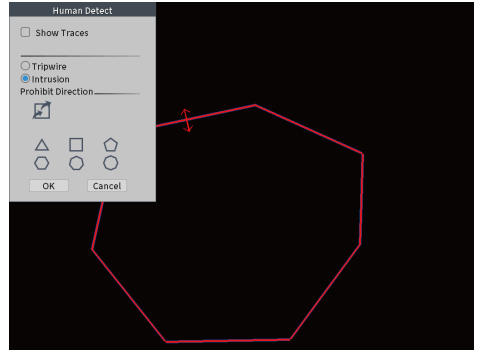
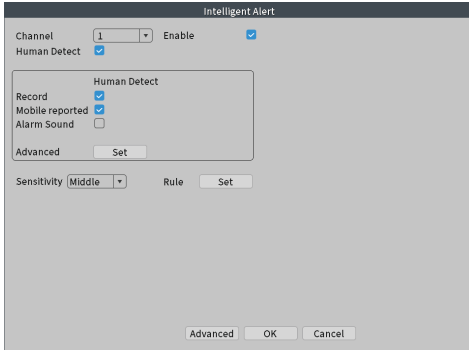




5.5 Intelligent Alert

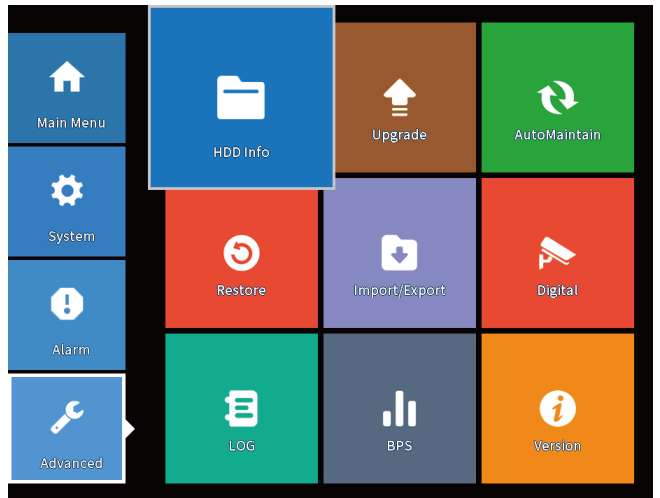
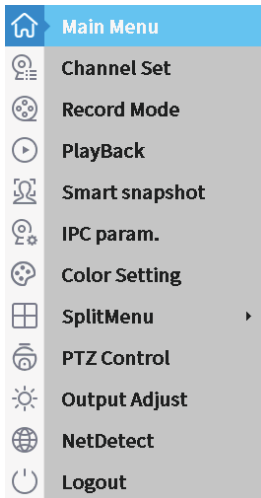
Right-click the mouse, select **[Main Menu]-[Alarm]-[Intelligent Alert]**
 Select the alarm mode, level and set up the area.

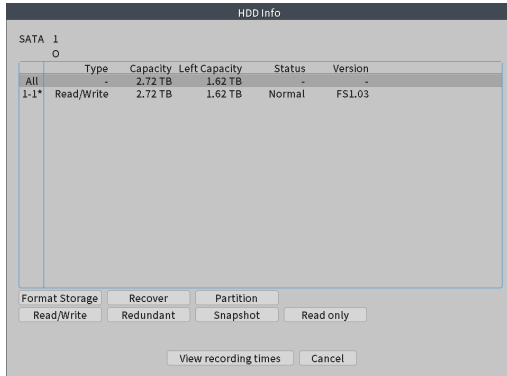




5.6 Storage management

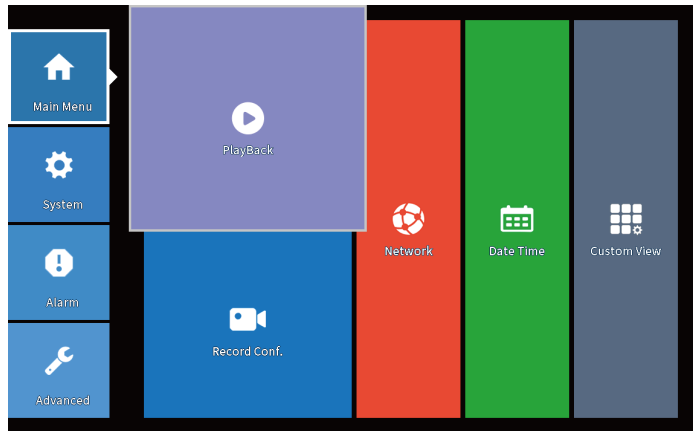
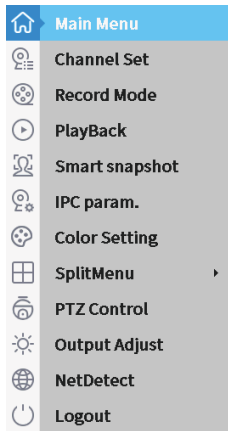
Right-click the mouse, select **[Main Menu]-[Advanced]-[HDD Info]**
 Check HDD Status and format.

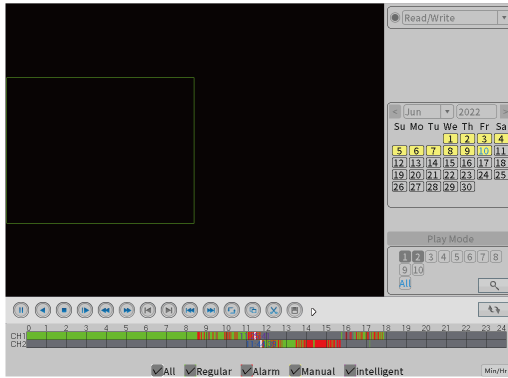




5.7 Video Playback

Right-click the mouse, select **[Main Menu]-[Main Menu]-[PlayBack]**
 Select channel and date for playback.

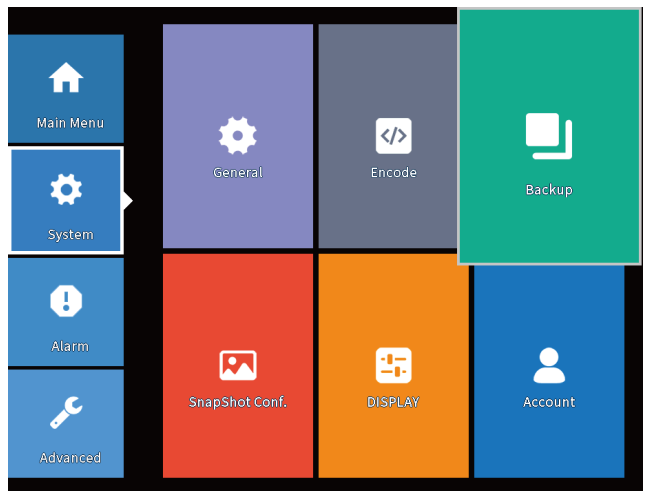
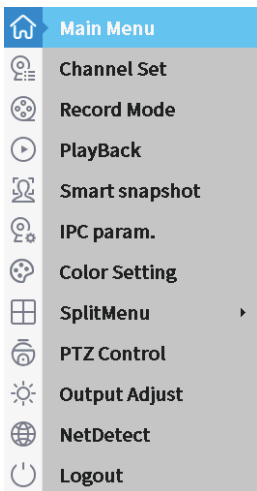


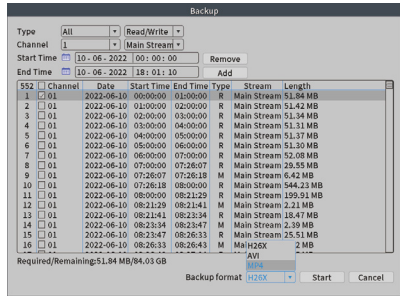
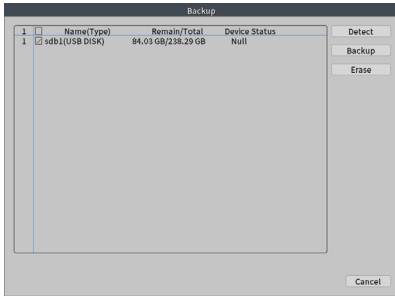


5.8 Video Backup

Right-click the mouse, select **[Main Menu]-[System]-[Backup]**

Insert the usb sticker into the NVR, after the system recognizes it, click **[Backup]**, select recording type, channel and time, click **[Remove]**, select the video file and format, click **[Start]** to backup.

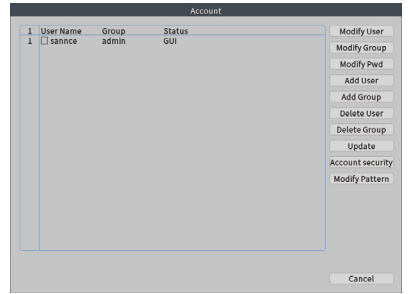
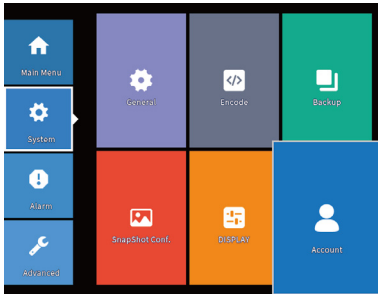
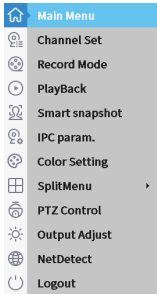




5.9 Account Management

Right-click the mouse, select **[Main Menu]-[System]-[Account]**

Manage your account and password, or add a new user information.

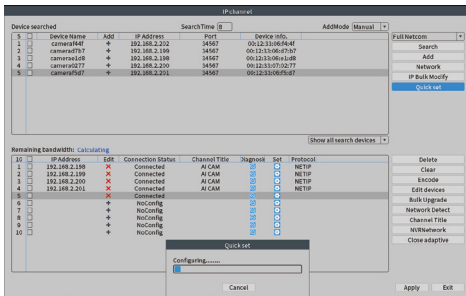
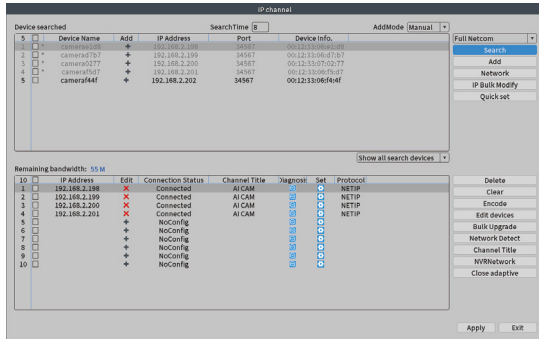
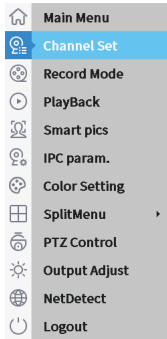


5.10 Camera Management

Right-click the mouse and click **[Channel Set]** to enter the channel management interface, where you can add or delete cameras.

1. Before adding a new camera, please make sure that the NVR has a free channel.
2. Connect the new camera to the PoE port of the NVR with a network cable.
3. Right-click **[Search]**, after searching for the camera, click **[Quick Set]**, the camera will be automatically added to the NVR.
4. Select the corresponding channel of the camera, click **[Edit Devices]**, you can change the protocol type, port number, user name or password of the camera.

Note: To add an Onvif camera, please make sure that the DHCP function is enabled on the camera, and you know the correct port number, user name and password of the camera.(Please consult the camera supplier for information)

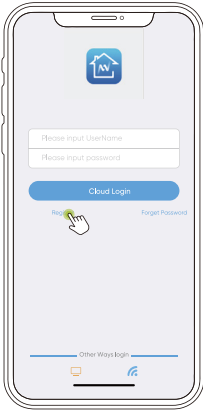


6. Remote Access

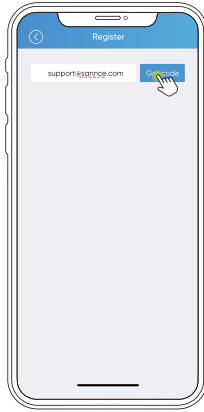
Note: Before remote access, please make sure that the device is properly connected to the network and that the device is "online". Please go to [Network] - [Net Test] to check.

- Step 1.** Search "Sannce Vision" APP in Apple Store or Google Play and install the APP
- Step 2.** Open the APP and there will be some options, if you already have an account, select "Cloud Login", if you do not have an account, select "Register". (Picture 1)
- Step 3.** Continue with registration. Please input your email, click on the "Get code". (Picture 2)
- Step 4.** You will receive the code promptly, and after entering the code, click on the "Next". (Picture 3)
- Step 5.** Please enter your username and password as required to complete registration and login. (Picture 4)
- Step 6.** Click on the "QR", scan the ID QR code on your device. (Picture 5 6)
- Step 7.** Add device successfully. You can select the channel for preview or operation. (Picture 7 8 9)

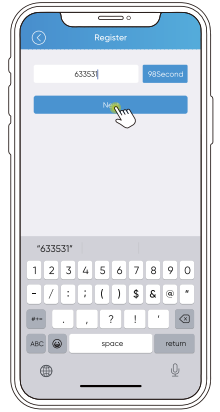
***Note:** Please allow the APP to access the location, storage, notification, microphone, speaker with your phone.



Picture 1



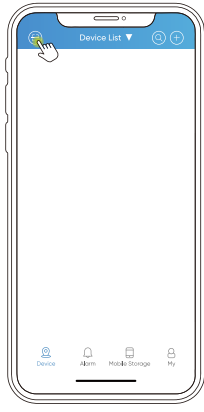
Picture 2



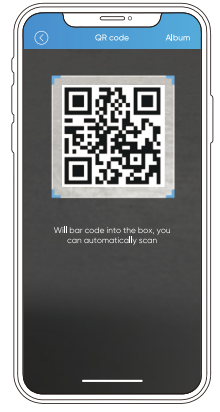
Picture 3



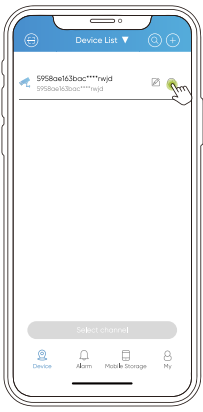
Picture 4



Picture 5



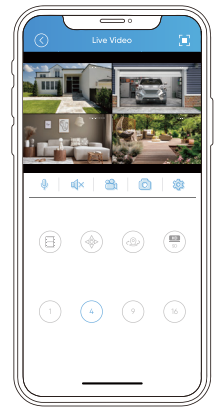
Picture 6



Picture 7



Picture 8



Picture 9

Production Information

Thank you for purchasing our NVR! This manual is designed for the installation and operation of this product. You can get more information about the features and functions of this product in details. Please read this manual carefully before using. Please contact us if you have any questions.

Legal Disclaimer

REGARDING TO THE PRODUCT WITH INTERNET ACCESS, THE USE OF PRODUCT SHALL BE WHOLLY AT YOUR OWN RISKS. OUR COMPANY SHALL NOT TAKE ANY RESPONSIBILITIES FOR ABNORMAL OPERATION, PRIVACY LEAKAGE OR OTHER DAMAGES RESULTING FROM CYBER ATTACK, HACKER ATTACK, VIRUS INSPECTION, OR OTHER INTERNET SECURITY RISKS; HOWEVER, OUR COMPANY WILL PROVIDE TIMELY TECHNICAL SUPPORT IF REQUIRED.

SURVEILLANCE LAWS VARY BY JURISDICTION. PLEASE CHECK ALL RELEVANT LAWS IN YOUR JURISDICTION BEFORE USING THIS PRODUCT IN ORDER TO ENSURE THAT YOUR USE CONFORMS THE APPLICABLE LAW. OUR COMPANY SHALL NOT BE LIABLE IN THE EVENT THAT THIS PRODUCT IS USED WITH ILLEGITIMATE PURPOSES.

IN THE EVENT OF ANY CONFLICTS BETWEEN THIS MANUAL AND THE APPLICABLE LAW, THE LATER PREVAILS.

Regulatory Information

FCC Information

This equipment has been tested and found to comply with the limits for a Class B digital device, pursuant to part 15 of the FCC Rules. These limits are designed to provide reasonable protection against harmful interference in a residential installation. This equipment generates uses and can radiate radio frequency energy and, if not installed and used in accordance with the instructions, may cause harmful interference to radio communications.

However, there is no guarantee that interference will not occur in a particular installation. If this equipment does cause harmful interference to radio or television reception, which can be determined by turning the equipment off and on, the user is encouraged to try to correct the interference by one or more of the following measures:

- Reorient or relocate the receiving antenna.
- Increase the separation between the equipment and receiver.
- Connect the equipment into an outlet on a circuit different from that to which the receiver is connected.
- Consult the dealer or an experienced radio/TV technician for help.

Changes or modifications not expressly approved by the party responsible for compliance could void the user's authority to operate the equipment.

This device complies with Part 15 of the FCC Rules. Operation is subject to the following two conditions:

(1) this device may not cause harmful interference, and (2) this device must accept any interference received, including interference that may cause undesired operation.

RF Exposure Warning Statements:

This equipment complies with FCC radiation exposure limits set forth for an uncontrolled environment. This equipment shall be installed and operated with minimum distance 20cm between the radiator & body.

EU Conformity Statement



This product and -if applicable -the supplied accessories too are marked with "CE" and comply therefore with the applicable harmonized European standards listed under the EMC Directive 2004/108/EC, the RoHS Directive 2011/65/EU.



2012/19/EU (WEEE directive): Products marked with this symbol cannot be disposed of as unsorted municipal waste in the European Union. For proper recycling, return this product to your local supplier upon the purchase of equivalent new equipment, or dispose of it at designated collection points. For more information see: www.recyclethis.info



2013/56/EU (battery directive): This product contains a battery that cannot be disposed of as unsorted municipal waste in the European Union. See the product documentation for specific battery information. The battery is marked with this symbol, which may include lettering to indicate cadmium (Cd), lead (Pb), or mercury (Hg). For proper recycling, return the battery to your supplier or to a designated collection point. For more information see: www.recyclethis.info

Safety Instruction

These instructions are intended to ensure that user can use the product correctly to avoid danger or property loss. The precaution measure is divided into [Warnings] and [Cautions].

Warnings: Serious injury or death may occur if any of the warnings are neglected.

Cautions: Injury or equipment damage may occur if any of the cautions are neglected.

Warnings: Follow these safeguards to prevent serious injury or death.	Cautions: Follow these precautions to prevent potential injury or material damage.



Warnings

- Proper configuration of all passwords and other security settings is the responsibility of the installer and/or end-user.
- In the use of the product, you must be in strict compliance with the electrical safety regulations of the nation and region. Please refer to technical specifications for detailed information.
- Input voltage should meet both the SELV (Safety Extra Low Voltage) and the Limited Power Source with 100 to 240 VAC or 12 VDC according to the IEC60950-1 standard. Please refer to technical specifications for detailed information.
- Do not connect several devices to one power adapter as adapter overload may cause over-heating or a fire hazard.
- Please make sure that the plug is firmly connected to the power socket.
- If smoke, odor or noise rise from the device, turn off the power at once and unplug the power cable, and then please contact the service center.

Note:

We will update this user manual from time to time without prior notice. If you have any questions, please feel free to contact us at support@sannce.com.

Prevention and Warning Tips:

Only qualified maintenance personnel can perform equipment installation and maintenance. Please make sure to read and understand the complete manual before installation.

- Please install the equipment away from the elderly and children, so as not to cause electrical injury.
- Please ensure the safety of electricity use to avoid fire caused by current overload.
- The NVR unit is designed for indoor use only. Make sure the device is installed in a well-ventilated and dust-free environment. Keep the NVR away from liquids.
- The camera unit supports dustproof and waterproof. ideal for outdoor use. Please make sure to fix it firmly. Avoid injury from falling.
- When connecting the cable of the camera unit, please ensure that the connection is waterproof and dustproof. Inadequate links can easily damage the device.
- Before connecting and disconnecting accessories and peripheral devices, turn off the power of the device to avoid damage to the device.
- This device should use the hard disk recommended by the factory. Hard disks of different quality may cause the device to fail to record and fail to start.



For more information,
please visit:

www.sannce.com



Shenzhen Kean Digital Co., Ltd.

ADD: 10th Floor, Rujun Building, NO. 105, The
Center Road, Bantian Street, Longgang District,
Shenzhen, 518129, China

Web: <https://www.sannce.com>

Tech Support: support@sannce.com

Made in China

UK	REP	THEMIS AR support ltd 85 Great Portland St, London, United Kingdom, W1W 7LT
----	-----	--

EC	REP	THEMIS AR Unterstützung UG Beedstrasse 54, In Dusseldorf, (40468), Deutschland
----	-----	---

