



Quick Start Guide

(EN/DE/FR/IT/ES)

Create a Smarter & Safer World

CONTENTS

EN

1. Connection Diagram	01
2. Add the Camera	02
3. Install the camera	04

DE

1. Schaltplan	05
2. Kamera hinzufügen	06
3. Installieren Sie die Kamera	08

FR

1. Diagramme de connexion	09
2. Ajouter la caméra	10
3. Installer la caméra	12

IT

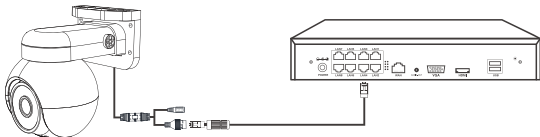
1. Schema di connessione	13
2. Aggiungi la fotocamera	14
3. Installare la telecamera	16

ES

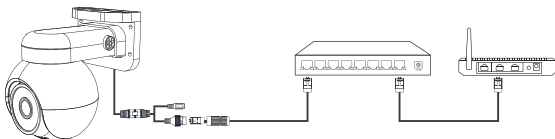
1. Diagrama de conexión	17
2. Agregar la cámara	18
3. Instale la cámara	20

1. Connection Diagram

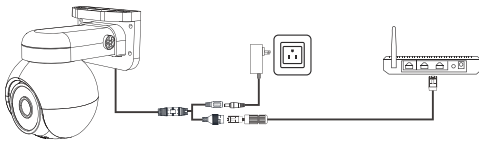
1) Use with PoE NVR



2) Use with PoE Switch



3) Use with router



2. Add the Camera

2.1 Added camera to NVR

Applicable to N98PBD/N96PBK.

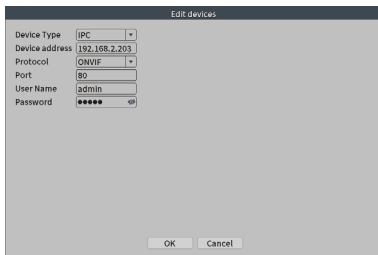
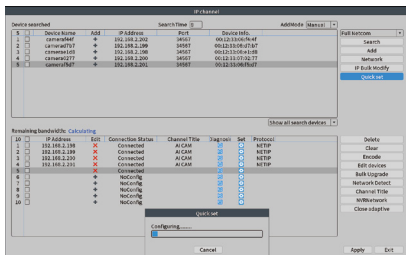
1. Before adding a new camera, please make sure that the NVR has a free channel.
2. Connect the camera to the PoE port of the NVR with a network cable.
3. Right-click the mouse and click **[Channel Set]**, Click **[Search]**, after searching for the camera, click **[Quick Set]**, the camera will be automatically added to the NVR.
4. Select the corresponding channel of the camera, click [Edit devices], you can change the protocol type, port number, user name or password of the camera.

Note: The camera supports Onvif protocol, and when adding to a 3rd party NVR, the specific operation interface must take precedence.

The screenshot displays the NVR's configuration interface. On the left is a vertical navigation menu with icons and labels: Main Menu, Channel Set (highlighted), Record Mode, Playback, Smart pics, IPC param., Color Setting, Split Menu, PTZ Control, Output Adjust, NetDetect, and Logout. The main area is titled 'IP channel' and contains a search results table. The table has columns for Device Name, Add, IP Address, Port, Device Info., and AddMode. Below the table, there is a 'Remaining bandwidth: 55 M' indicator and a table with columns for IP Address, Edit, Connection Status, Channel Title, Diagnosis, and Set. To the right of the main table is a 'Full Netcom' panel with buttons for Search, Add, Network, IP Bulk Modify, and Quick set. At the bottom right, there is a 'Delete' panel with buttons for Clear, Encode, Edit devices, Bulk Upgrade, Network Detect, Channel Title, NVRNetwork, and Close adaptive. At the very bottom, there are 'Apply' and 'Exit' buttons.

Device Name	Add	IP Address	Port	Device Info.	AddMode
* camera100	+	192.168.2.199	34567	00:12:33:06:01:89	
* camera1757	+	192.168.2.199	34567	00:12:33:06:01:87	
* camera19277	+	192.168.2.200	34567	00:12:33:07:02:77	
* camera19277	+	192.168.2.201	34567	00:12:33:06:01:87	
* camera14ef	+	192.168.2.202	34567	00:12:33:06:04:ef	

IP Address	Edit	Connection Status	Channel Title	Diagnosis	Set	Protocol
192.168.2.188	X	Connected	AI CAM	ON	OFF	NETIP
192.168.2.199	X	Connected	AI CAM	ON	OFF	NETIP
192.168.2.200	X	Connected	AI CAM	ON	OFF	NETIP
192.168.2.201	X	Connected	AI CAM	ON	OFF	NETIP
+		NoConfig		ON	OFF	
+		NoConfig		ON	OFF	
+		NoConfig		ON	OFF	
+		NoConfig		ON	OFF	
+		NoConfig		ON	OFF	
+		NoConfig		ON	OFF	

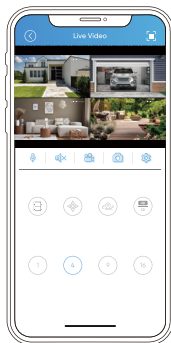
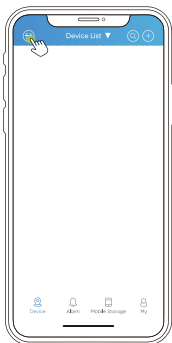


2.2 Added camera to APP

Download and install free **Sannce vision** from the Google Play Store or App Store. After creating an account, choose to scan this camera's QR code and name the device.

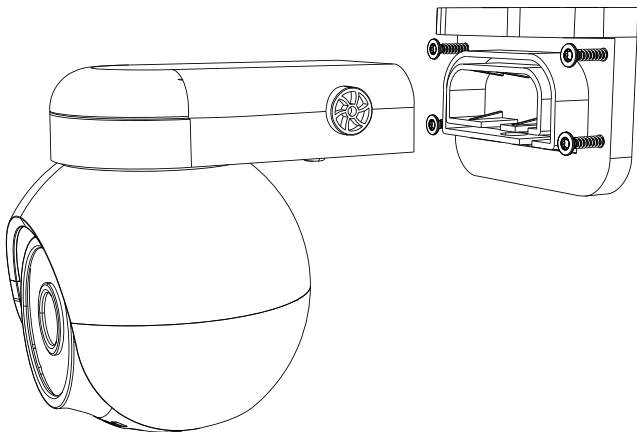


APP: Sannce Vision



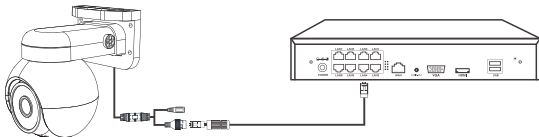
3. Install the camera

- A. Confirm that the surface of the object on which the camera is mounted can withstand three times the weight of the camera and the bracket
- B. choose a position 2 to 3 meters from the ground.
- C. Fix bracket to installation position.
- D. Mount the camera on the bracket.

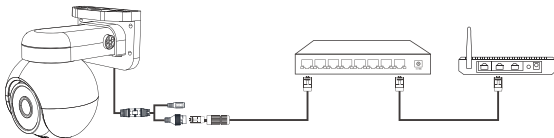


1. Schaltplan

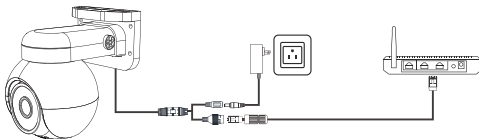
1) Verwendung mit PoE-NVR



2) Verwendung mit PoE-Switch



3) Verwendung mit Router



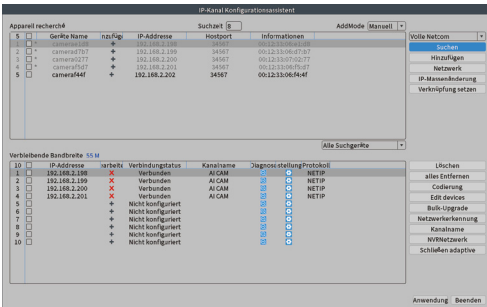
2. Kamera hinzufügen

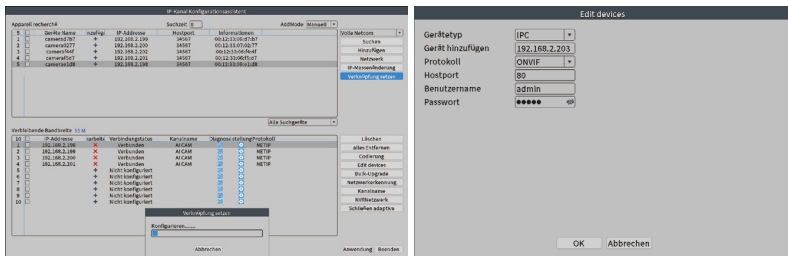
2.1 Kamera zum NVR hinzugefügt

Anwendbar für N98PBD/N96PBK.

1. Bevor Sie eine neue Kamera hinzufügen, stellen Sie bitte sicher, dass der NVR über einen freien Kanal verfügt.
2. Verbinden Sie die Kamera mit einem Netzkabel mit dem PoE-Port des NVR.
3. Klicken Sie auf **[Kanal-Set]**, klicken Sie auf **[Suchen]**, nachdem Sie nach der Kamera gesucht haben, klicken Sie auf **[Verknüpfung setzen]**, die Kamera wird automatisch zum NVR hinzugefügt.
4. Wählen Sie den entsprechenden Kanal der Kamera aus, klicken Sie auf [Edit devices], Sie können den Protokolltyp, die Portnummer, den Benutzernamen oder das Passwort der Kamera ändern.

Hinweis: Die Kamera unterstützt das Onvif-Protokoll und beim Hinzufügen zu einem NVR eines Drittanbieters muss die spezifische Bedienschnittstelle Vorrang haben.





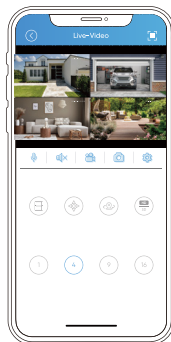
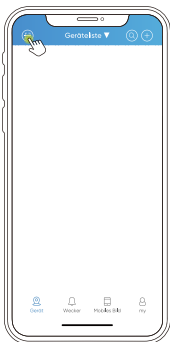
2.2 Kamera zur APP hinzugefügt

Laden Sie **Sannce Vision** kostenlos aus dem Google Play Store oder App Store herunter und installieren Sie es.

Nachdem Sie ein Konto erstellt haben, können Sie diesen Kamera-QR-Code scannen und dem Gerät einen Namen geben.

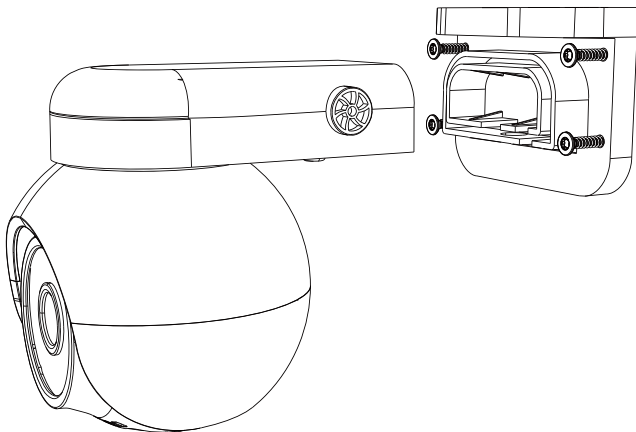


APP: Sannce Vision



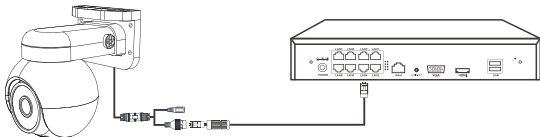
3. Installieren Sie die Kamera

- A. Stellen Sie sicher, dass die Oberfläche des Objekts, auf dem die Kamera montiert ist, dem dreifachen Gewicht der Kamera und der Halterung standhalten kann.
- B. Wählen Sie eine Position 2 bis 3 Meter über dem Boden.
- C. Halterung am Einbauort befestigen.
- D. Montieren Sie die Kamera an der Halterung.

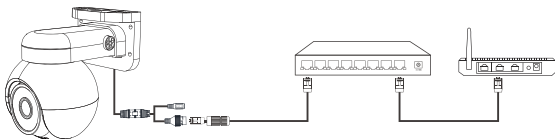


1. Diagramme de connexion

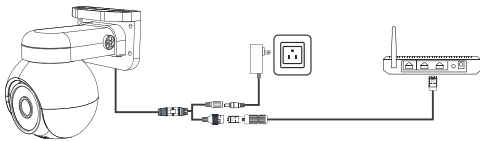
1) Utiliser avec PoE NVR



2) Utiliser avec le commutateur PoE



3) Utiliser avec un routeur



2. Ajouter la caméra

2.1 Caméra ajoutée au NVR

Applicable à N98PBD/N96PBK.

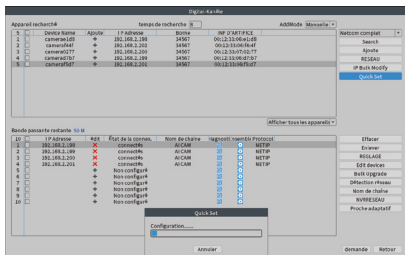
1. Avant d'ajouter une nouvelle caméra, assurez-vous que le NVR dispose d'un canal libre.
2. Connectez la nouvelle caméra au port PoE du NVR avec un câble réseau.
3. Cliquez le bouton droit de la souris et cliquez sur **(Set canal)**, cliquez sur **(Search)**, après avoir recherché la caméra, cliquez sur **(Quick Set)**, la caméra sera automatiquement ajoutée au NVR.
4. Sélectionnez le canal correspondant de la caméra, cliquez sur (Edit devices), vous pouvez modifier le type de protocole, le numéro de port, le nom d'utilisateur ou le mot de passe de la caméra.

Remarque : La caméra prend en charge le protocole Onvif, et lors de l'ajout à un NVR tiers, l'interface de fonctionnement spécifique doit avoir la priorité.

The screenshot shows the NVR web interface. On the left is a navigation menu with options: MENU, Set canal (selected), VIDEO, RETOUR D'EMPL., Instantané intelligent, param. IPC, COULEUR D'IMAGE, Menu partitionné, Cotrôle de PTZ, ECRAN, Détection de réseau, and ARRET. The main area displays the 'Appareil recherché' (Searched Device) table with columns for Device Name, Apuote, I P Adresse, Borne, and INF D'ARTIFICE. Below this is a table for 'Bande passante restante' (Remaining Bandwidth) with columns for IP Adresse, Edit, État de la connex., Nom de chaîne, sagnoot, nsmemb, and Protocoll. On the right side, there are buttons for 'Natcom complet', 'Search', 'Ajouter', 'RESEAU', 'IP Bulk Modify', and 'Quick Set'.

Appareil recherché	Apuote	I P Adresse	Borne	INF D'ARTIFICE
1 camera1198	+	192.168.2.198	34567	00:12:13:06:4F:4F
2 camera1797	+	192.168.2.199	34567	00:12:13:06:4F:4F
3 camera2777	+	192.168.2.200	34567	00:12:13:07:02:77
4 camera6547	+	192.168.2.201	34567	00:12:13:06:4F:4F
5 camera444f	+	192.168.2.202	34567	00:12:13:06:4F:4F

IP Adresse	Edit	État de la connex.	Nom de chaîne	sagnoot	nsmemb	Protocoll
192.168.2.198	X	connectés	AJ CAM	30	0	NETIP
192.168.2.199	X	connectés	AJ CAM	30	0	NETIP
192.168.2.200	X	connectés	AJ CAM	30	0	NETIP
192.168.2.201	X	connectés	AJ CAM	30	0	NETIP
+	+	Non configuré		30	0	
6	+	Non configuré		30	0	
7	+	Non configuré		30	0	
8	+	Non configuré		30	0	
9	+	Non configuré		30	0	
10	+	Non configuré		30	0	

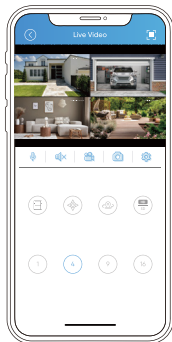
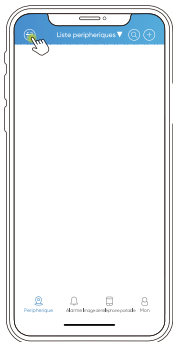


2.2 Caméra ajoutée à l'APP

Téléchargez et installez gratuitement **Sannce vision** depuis le Google Play Store ou l'App Store. Après avoir créé un compte, choisissez de scanner le code QR de cette caméra et nommez l'appareil.

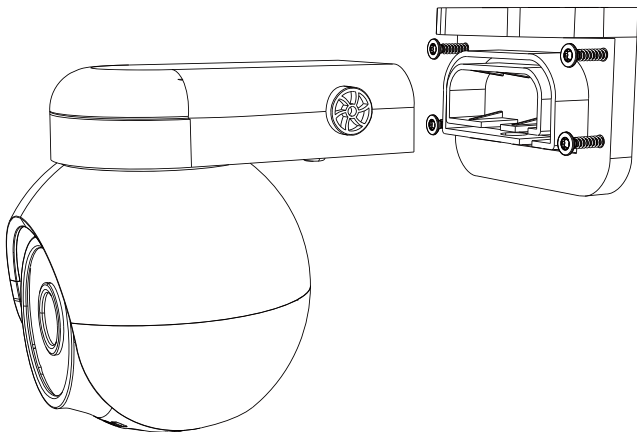


APP: Sannce Vision



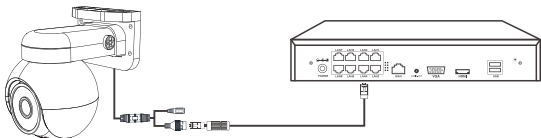
3. Installer la caméra

- A. Confirmez que la surface de l'objet sur lequel la caméra est montée peut supporter trois fois le poids de la caméra et du support.
- B. Choisissez une position à 2 ou 3 mètres du sol.
- C. Fixez le support à la position d'installation.
- D. Montez la caméra sur le support.

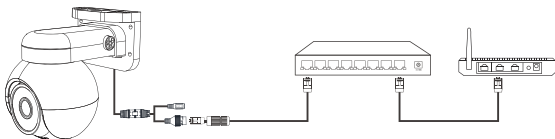


1. Schema di connessione

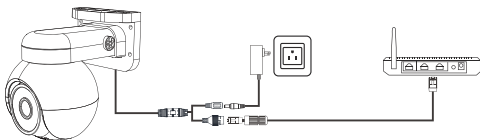
1) Utilizzare con PoE NVR



2) Utilizzare con interruttore PoE



3) Utilizzare con il router



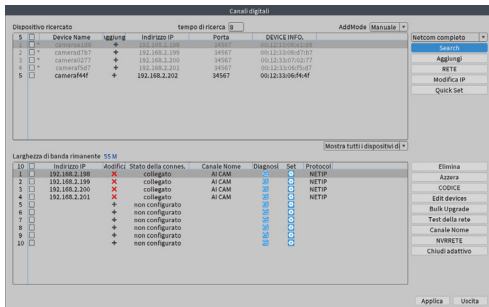
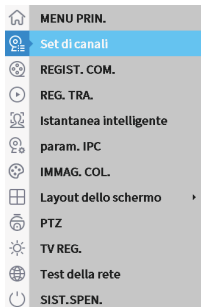
2. Aggiungi la fotocamera

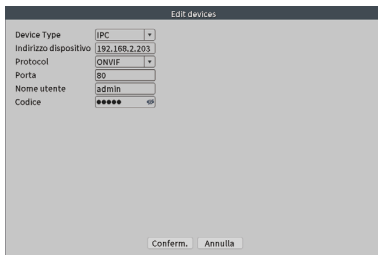
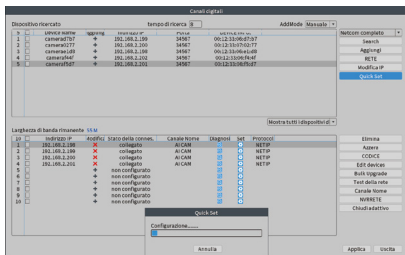
2.1 Telecamera aggiunta al NVR

Applicabile a N98PBD/N96PBK.

1. Prima di aggiungere una nuova telecamera, assicurarsi che l'NVR abbia un canale libero.
2. Collegare la telecamera alla porta PoE dell'NVR con un cavo di rete.
3. Fare clic con il pulsante destro del mouse e fare clic su **[Set di canali]**, fare clic su **[Search]**, dopo aver cercato la telecamera, fare clic su **[Quick Set]**, la telecamera verrà automaticamente aggiunta all'NVR.
4. Selezionare il canale corrispondente della telecamera, fare clic su [Edit devices], è possibile modificare il tipo di protocollo, il numero di porta, il nome utente o la password della telecamera.

Nota: la telecamera supporta il protocollo Onvif e, quando viene aggiunta a un NVR di terze parti, l'interfaccia operativa specifica deve avere la precedenza.





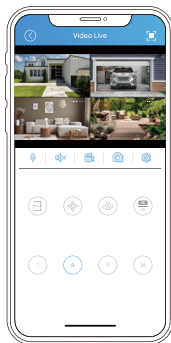
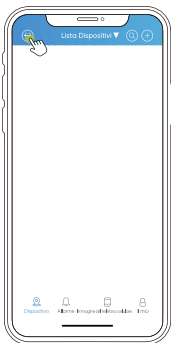
2.2 Fotocamera aggiunta all'APP

Scarica e installa gratuitamente **Sannce vision** dal Google Play Store o dall'App Store.

Dopo aver creato un account, scegli di scansionare il codice QR di questa fotocamera e assegna un nome al dispositivo.

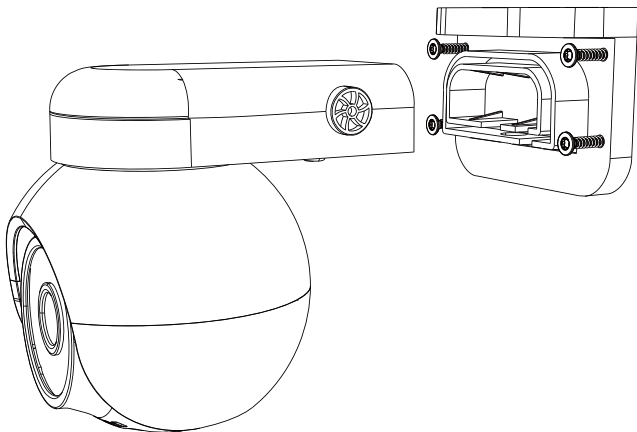


APP: Sannce Vision



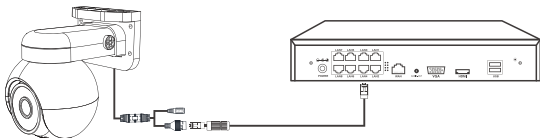
3. Installare la telecamera

- A. Verificare che la superficie dell'oggetto su cui è montata la telecamera sia in grado di sopportare il triplo del peso della telecamera e della staffa.
- B. Scegliere una posizione da 2 a 3 metri da terra.
- C. Fissare la staffa nella posizione di installazione.
- D. Montare la telecamera sulla staffa.

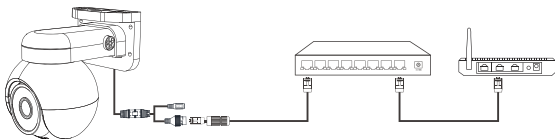


1. Diagrama de conexión

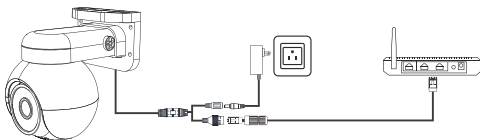
1) Usar con PoE NVR



2) Uso con conmutador PoE



3) Uso con enrutador



2. Agregar la cámara

2.1 Cámara añadida a NVR

Aplicable a N98PBD/N96PBK.

1. Antes de agregar una nueva cámara, asegúrese de que el NVR tenga un canal libre.
2. Conecte la cámara al puerto PoE del NVR con un cable de red.
3. Haga clic con el botón derecho del mouse y haga clic en **[Conjunto de canales]**, haga clic en **[Busqueda]**, después de buscar la cámara, haga clic en **[Quick Set]**, la cámara se agregará automáticamente al NVR.
4. Seleccione el canal correspondiente de la cámara, haga clic en [Editar dispositivos], puede cambiar el tipo de protocolo, número de puerto, nombre de usuario o contraseña de la cámara.

Nota: La cámara es compatible con el protocolo Onvif, y cuando se agrega a un NVR de terceros, la interfaz de operación específica debe tener prioridad.

Menu Principal

- Conjunto de canales
- Modo Grabacion
- Reproducir
- Instantánea inteligente
- parám. IPC
- Ajuste Color
- Diseño de pantalla
- Control PTZ
- Ajuste de Salida
- Detección de red
- Logout

Canales digitales

Dispositivo buscado

S	Nombre Dispositivo	Direccion IP	Puerto	Dispositivo	AdMóde	Manual
1	cameras200	192.168.2.198	34567	00.12.13.06/F4/H		
2	cameras201	192.168.2.199	34567	00.12.13.06/F4/H		
3	cameras277	192.168.2.200	34567	00.12.13.07/02.77		
4	cameras202	192.168.2.201	34567	00.12.13.06/F4/H		
5	cameras44f	192.168.2.202	34567	00.12.13.06/F4/H		

Mostrar todos los disposit...

Archo de banda restante: 55 M

ID	Direccion IP	editar	Estado de la cone.	Título Canal	logótipo	Conjuntó	Protocoll
1	192.168.2.198	X	conectado	AI CAM	ON	ON	NETIP
2	192.168.2.199	X	conectado	AI CAM	ON	ON	NETIP
3	192.168.2.200	X	conectado	AI CAM	ON	ON	NETIP
4	192.168.2.201	X	conectado	AI CAM	ON	ON	NETIP
5			no se ha configurar.		ON	ON	
6			no se ha configurar.		ON	ON	
7			no se ha configurar.		ON	ON	
8			no se ha configurar.		ON	ON	
9			no se ha configurar.		ON	ON	
10			no se ha configurar.		ON	ON	

Buscar

Vacio

Configuración

Editar dispositivos

Solves Actualización

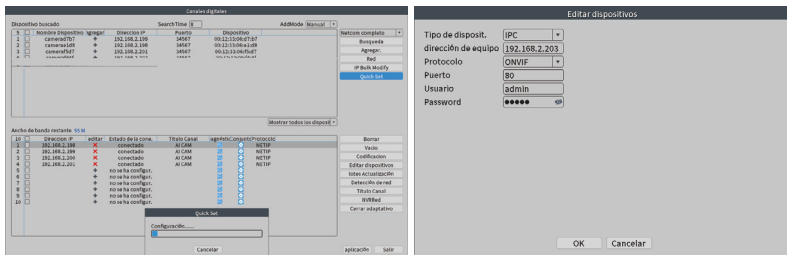
Detección de red

Título Canal

syncmod

Cerrar adaptativo

aplicación Sair



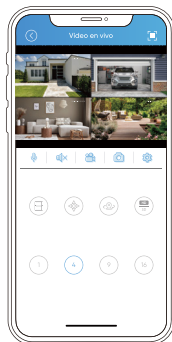
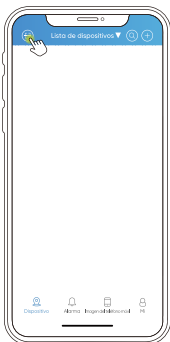
2.2 Agregar cámara a la aplicación

Descargue e instale gratis **Sannce vision** desde Google Play Store o App Store.

Después de crear una cuenta, elija escanear el código QR de esta cámara y asigne un nombre al dispositivo.

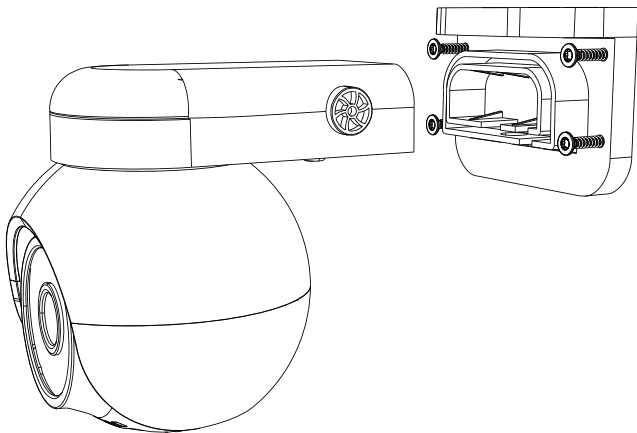


APP: Sannce Vision



3. Instale la cámara

- A. Confirme que la superficie del objeto en el que está montada la cámara puede soportar tres veces el peso de la cámara y el soporte.
- B. Elija una posición de 2 a 3 metros del suelo.
- C. Fije el soporte a la posición de instalación.
- D. Monte la cámara en el soporte.



Production Information

Thank you for purchasing our NVR! This manual is designed for the installation and operation of this product. You can get more information about the features and functions of this product in details. Please read this manual carefully before using. Please contact us if you have any questions.

Legal Disclaimer

REGARDING TO THE PRODUCT WITH INTERNET ACCESS, THE USE OF PRODUCT SHALL BE WHOLLY AT YOUR OWN RISKS. OUR COMPANY SHALL NOT TAKE ANY RESPONSIBILITIES FOR ABNORMAL OPERATION, PRIVACY LEAKAGE OR OTHER DAMAGES RESULTING FROM CYBER ATTACK, HACKER ATTACK, VIRUS INSPECTION, OR OTHER INTERNET SECURITY RISKS; HOWEVER, OUR COMPANY WILL PROVIDE TIMELY TECHNICAL SUPPORT IF REQUIRED.

SURVEILLANCE LAWS VARY BY JURISDICTION. PLEASE CHECK ALL RELEVANT LAWS IN YOUR JURISDICTION BEFORE USING THIS PRODUCT IN ORDER TO ENSURE THAT YOUR USE CONFORMS THE APPLICABLE LAW. OUR COMPANY SHALL NOT BE LIABLE IN THE EVENT THAT THIS PRODUCT IS USED WITH ILLEGITIMATE PURPOSES.

IN THE EVENT OF ANY CONFLICTS BETWEEN THIS MANUAL AND THE APPLICABLE LAW, THE LATER PREVAILS.

Regulatory Information

FCC Information

This equipment has been tested and found to comply with the limits for a Class B digital device, pursuant to part 15 of the FCC Rules. These limits are designed to provide reasonable protection against harmful interference in a residential installation. This equipment generates uses and can radiate radio frequency energy and, if not installed and used in accordance with the instructions, may cause harmful interference to radio communications.

However, there is no guarantee that interference will not occur in a particular installation. If this equipment does cause harmful interference to radio or television reception, which can be determined by turning the equipment off and on, the user is encouraged to try to correct the interference by one or more of the following measures:

- Reorient or relocate the receiving antenna.
- Increase the separation between the equipment and receiver.
- Connect the equipment into an outlet on a circuit different from that to which the receiver is connected.
- Consult the dealer or an experienced radio/TV technician for help.

Changes or modifications not expressly approved by the party responsible for compliance could void the user's authority to operate the equipment.

This device complies with Part 15 of the FCC Rules. Operation is subject to the following two conditions:

- (1) this device may not cause harmful interference, and
- (2) this device must accept any interference received, including interference that may cause undesired operation.

RF Exposure Warning Statements:

This equipment complies with FCC radiation exposure limits set forth for an uncontrolled environment. This equipment shall be installed and operated with minimum distance 20cm between the radiator & body.

EU Conformity Statement



This product and –if applicable –the supplied accessories too are marked with "CE" and comply therefore with the applicable harmonized European standards listed under the EMC Directive 2004/108/EC, the RoHS Directive 2011/65/EU.



2012/19/EU (WEEE directive): Products marked with this symbol cannot be disposed of as unsorted municipal waste in the European Union. For proper recycling, return this product to your local supplier upon the purchase of equivalent new equipment, or dispose of it at designated collection points. For more information see: www.recyclethis.info



2013/56/EU (battery directive): This product contains a battery that cannot be disposed of as unsorted municipal waste in the European Union. See the product documentation for specific battery information. The battery is marked with this symbol, which may include lettering to indicate cadmium (Cd), lead (Pb), or mercury (Hg). For proper recycling, return the battery to your supplier or to a designated collection point. For more information see: www.recyclethis.info

Safety Instruction

These instructions are intended to ensure that user can use the product correctly to avoid danger or property loss. The precaution measure is divided into [Warnings] and [Cautions].

Warnings: Serious injury or death may occur if any of the warnings are neglected.

Cautions: Injury or equipment damage may occur if any of the cautions are neglected.



Warnings: Follow these safeguards to prevent serious injury or death.



Cautions: Follow these precautions to prevent potential injury or material damage.



Warnings

- Proper configuration of all passwords and other security settings is the responsibility of the installer and/or end-user.
- In the use of the product, you must be in strict compliance with the electrical safety regulations of the nation and region. Please refer to technical specifications for detailed information.
- Input voltage should meet both the SELV (Safety Extra Low Voltage) and the Limited Power Source with 100 to 240 VAC or 12 VDC according to the IEC60950-1 standard. Please refer to technical specifications for detailed information.
- Do not connect several devices to one power adapter as adapter overload may cause over-heating or a fire hazard.
- Please make sure that the plug is firmly connected to the power socket.
- If smoke, odor or noise rise from the device, turn off the power at once and unplug the power cable, and then please contact the service center.

Note:

We will update this user manual from time to time without prior notice. If you have any questions, please feel free to contact us at support@sannce.com.

Prevention and Warning Tips:

Only qualified maintenance personnel can perform equipment installation and maintenance. Please make sure to read and understand the complete manual before installation.

- Please install the equipment away from the elderly and children, so as not to cause electrical injury.
- Please ensure the safety of electricity use to avoid fire caused by current overload.
- The NVR unit is designed for indoor use only. Make sure the device is installed in a well-ventilated and dust-free environment. Keep the NVR away from liquids.
- The camera unit supports dustproof and waterproof. ideal for outdoor use. Please make sure to fix it firmly. Avoid injury from falling.
- When connecting the cable of the camera unit, please ensure that the connection is waterproof and dustproof. Inadequate links can easily damage the device.
- Before connecting and disconnecting accessories and peripheral devices, turn off the power of the device to avoid damage to the device.
- This device should use the hard disk recommended by the factory. Hard disks of different quality may cause the device to fail to record and fail to start.



For more information,
please visit:

www.sannce.com



Shenzhen Kean Digital Co., Ltd.

ADD: 10th Floor, Rujun Building, NO. 105, The
Center Road, Bantian Street, Longgang District,
Shenzhen, 518129, China

Help center: <https://support.sannce.com>

Tech Support: support@sannce.com

Made in China



THEMIS AR support Ltd
85 Great Portland St, London, United Kingdom, W1W 7LT



THEMIS AR Unterstützung UG
Beedstrasse 54, In Dusseldorf, (40468), Deutschland

