



Quick Start Guide

www.sannce.com

Production Information

Thank you for purchasing our product! This manual is designed for the installation and operation of this product. You can get more information about the features and functions of this product in details. Please read this manual carefully before using. Please contact us if you have any questions.

Legal Disclaimer

REGARDING TO THE PRODUCT WITH INTERNET ACCESS, THE USE OF PRODUCT SHALL BE WHOLLY AT YOUR OWN RISKS. OUR COMPANY SHALL NOT TAKE ANY RESPONSIBILITIES FOR ABNORMAL OPERATION, PRIVACY LEAKAGE OR OTHER DAMAGES RESULTING FROM CYBER ATTACK, HACKER ATTACK, VIRUS INSPECTION, OR OTHER INTERNET SECURITY RISKS; HOWEVER, OUR COMPANY WILL PROVIDE TIMELY TECHNICAL SUPPORT IF REQUIRED.

SURVEILLANCE LAWS VARY BY JURISDICTION. PLEASE CHECK ALL RELEVANT LAWS IN YOUR JURISDICTION BEFORE USING THIS PRODUCT IN ORDER TO ENSURE THAT YOUR USE CONFORMS THE APPLICABLE LAW. OUR COMPANY SHALL NOT BE LIABLE IN THE EVENT THAT THIS PRODUCT IS USED WITH ILLEGITIMATE PURPOSES.

IN THE EVENT OF ANY CONFLICTS BETWEEN THIS MANUAL AND THE APPLICABLE LAW, THE LATER PREVAILS.

Regulatory Information

FCC Information

Please take attention that changes or modification are not expressly approved by the party responsible for compliance could void the user's authority to operate the equipment.

FCC Compliance: This equipment has been tested and found to comply with the limits for a Class A digital device, pursuant to part 15 of the FCC Rules. These limits are designed to provide reasonable protection against harmful interference when the equipment is operated in a commercial environment. This equipment generates, uses, and can radiate radio frequency energy and, if not installed and used in accordance with the instruction manual, may cause harmful interference to radio communications. Operation of this equipment in a residential area is likely to cause harmful interference in which case the user will be required to correct the interference at his own expense.

FCC Conditions

This device complies with part 15 of the FCC Rules. Operation is subject to the following two conditions:

- 1.This device may not cause harmful interference.
- 2.This device must accept any interference received, including interference that may cause undesired operation.

EU Conformity Statement

CE This product and - if applicable - the supplied accessories too are marked with "CE" and comply therefore with the applicable harmonized European standards listed under the EMC Directive 2004/108/EC, the RoHS Directive 2011/65/EU and Amendment (EU)2015/863.



2012/19/EU (WEEE directive): Products marked with this symbol cannot be disposed of as unsorted municipal waste in the European Union. For proper recycling, return this product to your local supplier upon the purchase of equivalent new equipment, or dispose of it at designated collection points. For more information see: www.recyclethis.info



2013/56/EU (battery directive): This product contains a battery that cannot be disposed of as unsorted municipal waste in the European Union. See the product documentation for specific battery information. The battery is marked with this symbol, which may include lettering to indicate cadmium (Cd), lead (Pb), or mercury (Hg). For proper recycling, return the battery to your supplier or to a designated collection point. For more information see: www.recyclethis.info

Safety Instruction

These instructions are intended to ensure that user can use the product correctly to avoid danger or property loss. The precaution measure is divided into [Warnings] and [Cautions].

Warnings: Serious injury or death may occur if any of the warnings are neglected.

Cautions: Injury or equipment damage may occur if any of the cautions are neglected.

Warnings: Follow these safeguards to prevent serious injury or death.	Cautions: Follow these precautions to prevent potential injury or material damage.



Warnings

- Proper configuration of all passwords and other security settings is the responsibility of the installer and/or end-user.
- In the use of the product, you must be in strict compliance with the electrical safety regulations of the nation and region. Please refer to technical specifications for detailed information.

- Input voltage should meet both the SELV (Safety Extra Low Voltage) and the Limited Power Source with 100 to 240 VAC or 12 VDC according to the IEC60950-1 standard. Please refer to technical specifications for detailed information.
- Do not connect several devices to one power adapter as adapter overload may cause over-heating or a fire hazard.
- Please make sure that the plug is firmly connected to the power socket.
- If smoke, odor or noise rise from the device, turn off the power at once and unplug the power cable, and then please contact the service center.

Preventive and Cautionary Tips

Before connecting and operating your device, please be advised of the following tips:

- Ensure unit is installed in a well-ventilated, dust-free environment.
- Ensure environmental conditions meet factory specifications.
- Ensure unit is properly secured to a rack or shelf. Major shocks or jolts to the unit as a result of dropping it may cause damage to the sensitive electronics within the unit.
- Use the device in conjunction with an UPS if possible.
- Power down the unit before connecting and disconnecting accessories and peripherals.
- A factory recommended HDD should be used for this device.
- Improper use or replacement of the battery may result in hazard of explosion. Replace with the same or equivalent type only. Dispose of used batteries according to the instructions provided by the battery manufacture.

CONTENTS

Chapter 1 Installation and Connections

1.1 Installation	05
1.2 Hard Disk Installation	05

Chapter 2 Menu Operation

2.1 Startup Wizard	06
2.2 Main menu	09
2.3 Login system	10
2.4 Playback	10
2.5 Backup	12
2.6 Email Setting	13

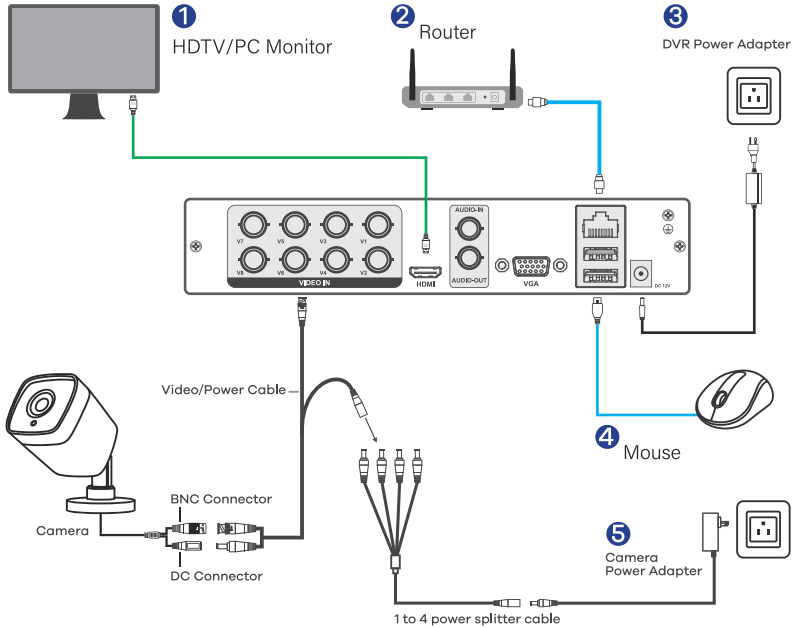
Chapter 3 Remote Control

3.1 Accessing by Mobile Phone APP	15
---	----

Chapter 1 Installation and Connections

1.1 Installation

Different models have different backplane interfaces



1.2 Hard Disk Installation

The DVR system should install a SATA internal hard drive for recording. The system shows the real-time viewing interface, but you can't record or playback without installing the hard drive.



1. disassemble the screw



2. disassemble the cover



3. Place and fix the hard disk



4. connect the data wire



5. connect the power wire



6. cover the machine



7. fix the cover



◀ Connect the data wire and the power wire to the corresponding port of the hard disk

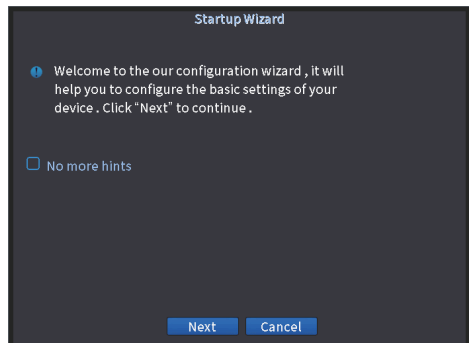
Notes:

Please turn off the power before you install the hard drive. You can skip this step if you have installed the hard drive into your DVR in advance.

Chapter 2 Menu Operation

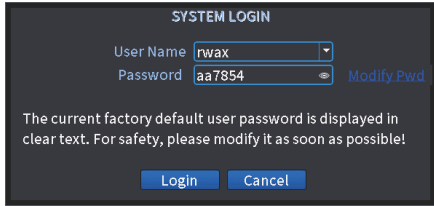
2.1 Startup Wizard

After boot the DVR, Startup wizard will display on the screen. You can check and enable **"Don't display the wizard again"** if you don't want to see Startup wizard next time, then click **[Next]**.



Set password:

Click **"Modify Pwd"** and input new password to modify default password and set or skip pattern.

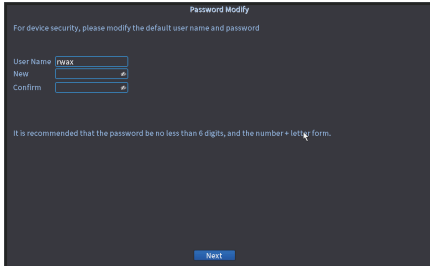


SYSTEM LOGIN

User Name

Password [Modify Pwd](#)

The current factory default user password is displayed in clear text. For safety, please modify it as soon as possible!



Password Modify

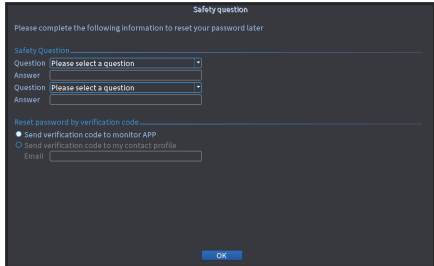
For device security, please modify the default user name and password

User Name

New

Confirm

It is recommended that the password be no less than 6 digits, and the number + letter form.



Safety question

Please complete the following information to reset your password later

Safety Question _____

Question

Answer

Question

Answer

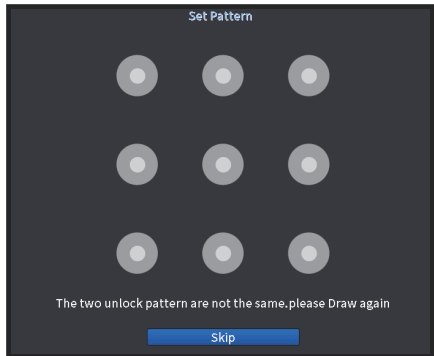
Reset password by verification code _____

Send verification code to monitor APP

Send verification code to my contact profile

Email

Set pattern or skip

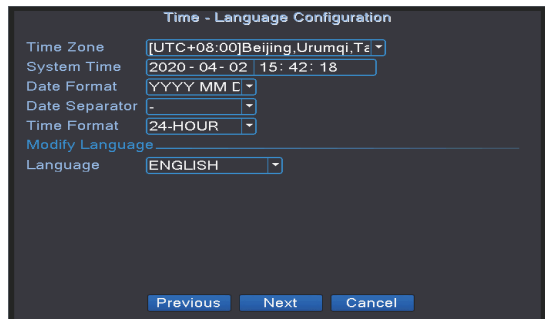


Set Pattern

The two unlock pattern are not the same, please Draw again

Set time & Language:

Select the right Time zone and language.



Time - Language Configuration

Time Zone

System Time

Date Format

Date Separator

Time Format

Modify Language _____

Language

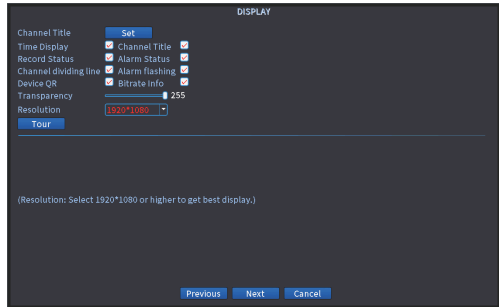
Record Configuration:

Configure recording plan.



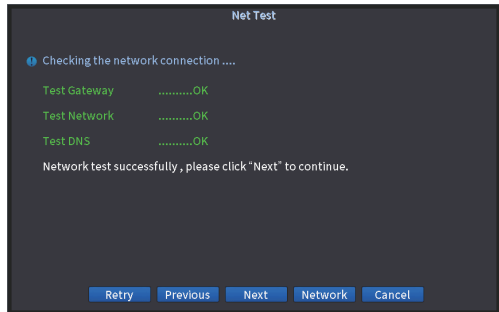
Set Display:

Please try to select 1920*1080 or higher resolution to get better display depend on your monitor function.



Net Test:

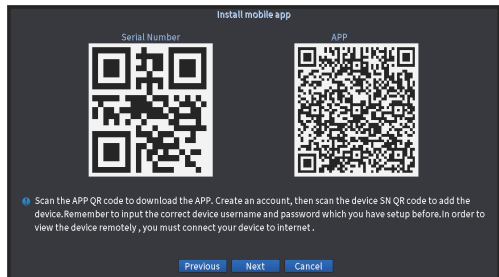
Test gateway/network/DNS, "OK" means the DVR network is OK.



Install mobile APP

[Serial Number]: Scan the QR code to add device in APP.

[APP]: Scan the QR code to download SANNCE Vision APP, it support Android and iOS mobile phone.



Thank you for choosing our products and click "OK" to complete the startup wizard.



2.2 Main menu

(Right click to call Main Menu)



[Main Menu]: Click the main menu to set your device.

[Startup Wizard]: Click to enter into the configuration wizard.

[Record Mode]: Click to set record modes for your device.

[Playback]: Click to search and playback the records.

[PTZ Control]: Click to operate PTZ function(only support PTZ camera).

[XVI Control]: Click to operate XVI camera function.

[Alarm light]: Click to operate alarm light on/off.

[Face detection]: Click to display face image list.

[XVI&AHD]: Click to select camera signal mode.

[HighSpeedPTZ]: Click to control high speed camera PTZ function.

[Color Setting]: Click to set the selective image parameters.

[Output Adjust]: Click to set TV output area parameters.

[NetDetect]: Click to check DVR network status.

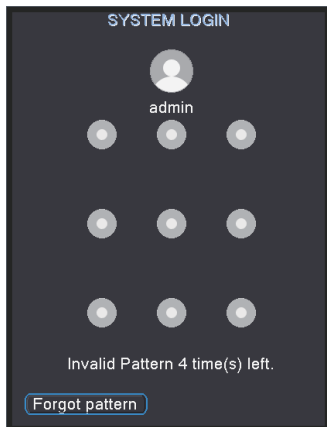
[Logout]: Click to logout, shut down or reboot up the system.

[View 1/4/8/9/16]: Preview in 1/4/8/9/16 windows.

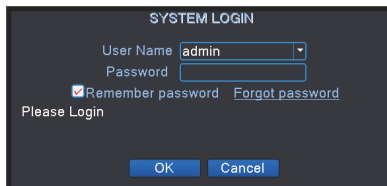
2.3 Login system

Log in system by draw pattern or selecting user name and inputting password.

Method 1: Draw pattern



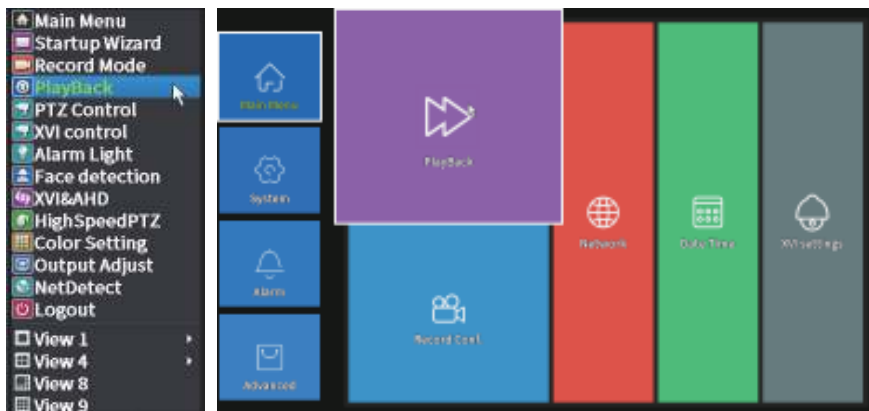
Method 2: Input password



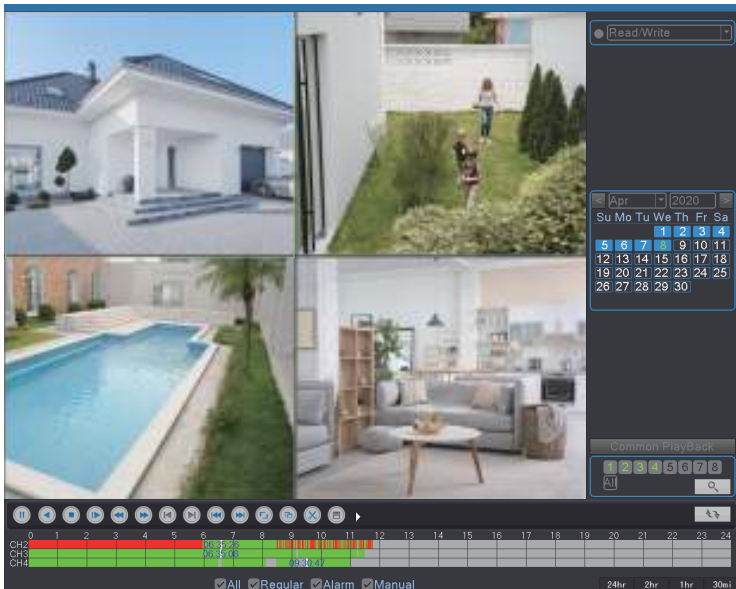
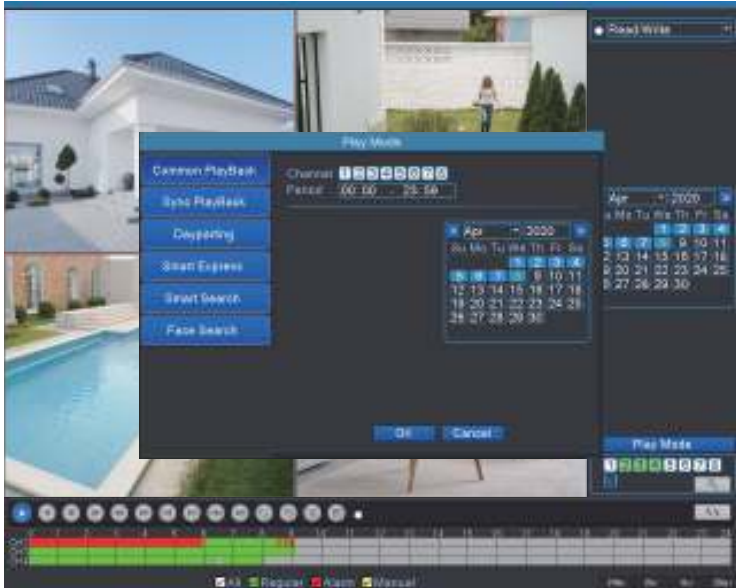
2.4 Playback

Two methods for you to playback the video files in the hard drive:

1. Right-click mouse and then select **[Playback]** in the menu structure on your desk.
2. Enter **[Main Menu]-[Main Menu]- [Playback]**.



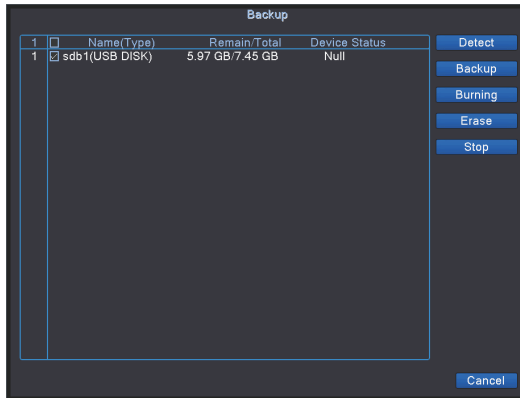
The playback mode includes common playback, sync playback, dayparting, smart express, smart search, face search.



2.5 Backup

Go to DVR's **[Main Menu]-[System]-[Backup]**, you can backup the video files to external storage. Plug the USB drive into the USB 2.0 port, as shown in the figure below.

Click **[Backup]** button and a dialog box will pop up. You can select the backup files according to the **[Type]**, **[Channel]**, **[Start Time]**, **[End Time]**. Add your files, select **[Backup format]** (AVI or H.264) and click **[Start]**, as shown in the figure below.



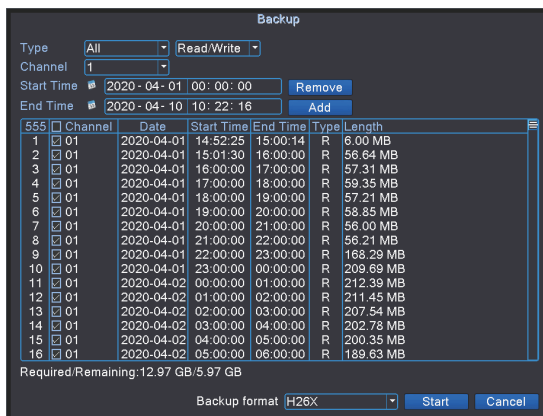
[Type]: Select the corresponding type ([All], [Alarm], [MD], [Alarm/MD], [Manual], [General]) to backup.

[Channel]: Select the corresponding channel to backup.

[Start Time]: Select time to start backup.

[End Time]: Select time to end backup.

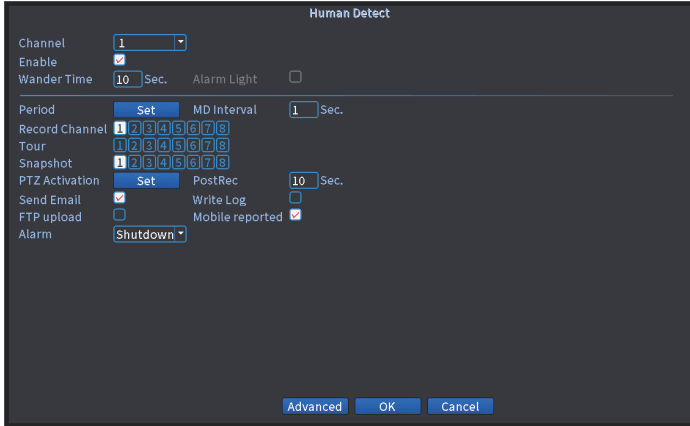
Click [OK] when you get the message of [Backup finished], then you can plug the USB drive out. You need to install the player to play the video on the PC.



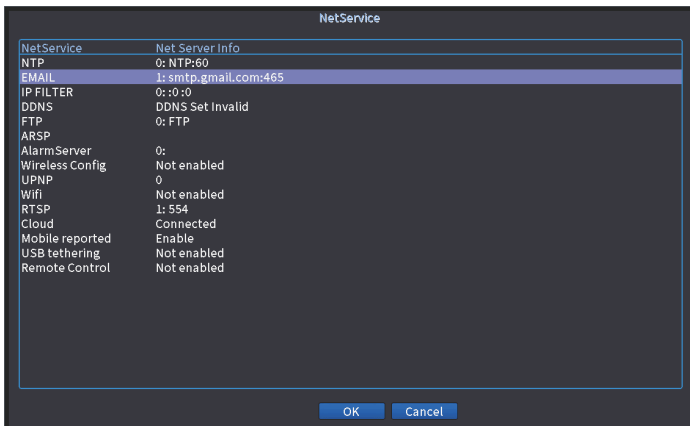
2.6 Email Setting

Steps:

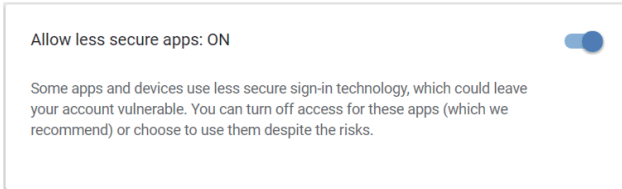
1. Make sure your DVR has connected to the router and Internet successfully. You can go to DVR's **[Main Menu]-[Advanced]-[Version]** to confirm that the **[Nat status]** shows "connected".
2. Please go to DVR's **[Main Menu]-[Alarm]-[Human detect]** to tick **[Enable]** and **[Send Email]** function, as shown in the figure below.



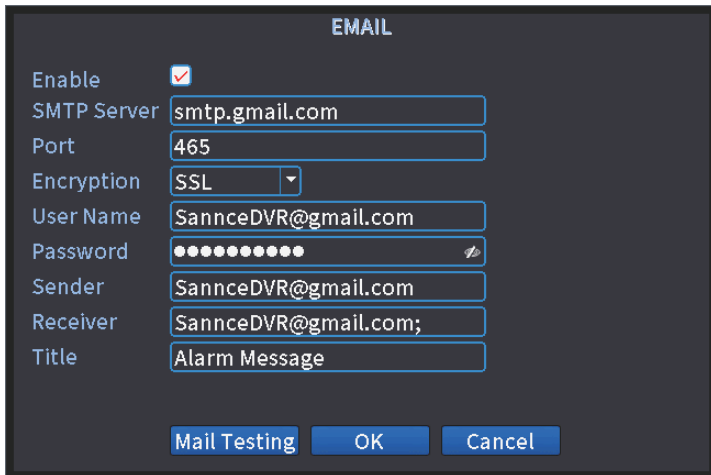
3. Go to DVR's **[Main Menu]-[Main Menu]-[Network]-[Net Service]-[EMAIL]** to enter the interface of Email Setting, double-click **[EMAIL]**, as shown in the figure below.



4. Login your Gmail mailbox on the website, and enter <https://myaccount.google.com/security?pli=1#connectedapps>, and then turn it on, as shown in the figure below.



5. Please tick **[Enable]** and select "SSL" in the **[Encryption]** option, then input the information as required. For example, SMTP Server is **[smtp.gmail.com]** (you must enable the **[Less secure on]** on the web page), **[Port]** is **[465]**, **[User Name]** and **[Sender]** is your gmail account, **[Password]** is your gmail account password, **[Receiver]** can be any email, change **[Title]** according to you needs, and then click **[OK]** to save, as shown in the figure below. Make sure your **[Mail Testing]** succeeds, and then click **[OK]** to save. It will send alerts to your email when there is motion detected.

A screenshot of an "EMAIL" configuration dialog box with a dark background. The "Enable" checkbox is checked. The fields are: SMTP Server (smtp.gmail.com), Port (465), Encryption (SSL), User Name (SannceDVR@gmail.com), Password (masked with dots), Sender (SannceDVR@gmail.com), Receiver (SannceDVR@gmail.com;), and Title (Alarm Message). At the bottom are three buttons: "Mail Testing", "OK", and "Cancel".

EMAIL	
Enable	<input checked="" type="checkbox"/>
SMTP Server	smtp.gmail.com
Port	465
Encryption	SSL
User Name	SannceDVR@gmail.com
Password	●●●●●●●●
Sender	SannceDVR@gmail.com
Receiver	SannceDVR@gmail.com;
Title	Alarm Message
Mail Testing OK Cancel	

Notes:

The account of User Name is the same as Sender, while Receiver is a different account to receive email alerts. Click **[OK]** to save after **[Mail Testing]** succeeds. It will send alarm message. Please check the camera after you got the alarm message and check the recorded video later.

Chapter 3 Remote Control

3.1 Accessing by Mobile Phone APP (Sannce vision)

- a. Search and Install “**Sannce Vision**” app for free from the APP Store and play store. Tap the icon Sannce Vision to open the APP.
- b. Tap Register to create a new account (Need to input the User name and Password).
- c. Tap [+] to add a new device.
- d. Configure the following.



Manual Add Quick Configuration

Device Name

Serial Number

admin


Password

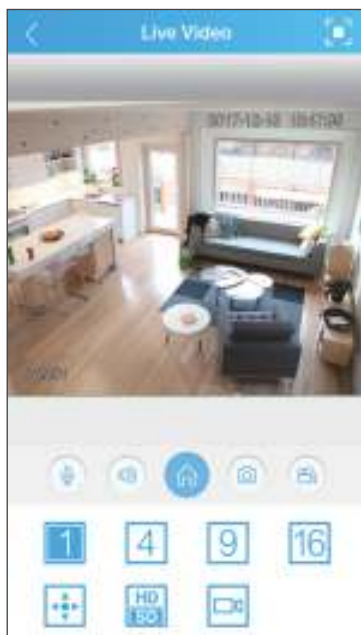
DNS

OK

Search

*Search for devices under the LAN

1. **[Device Name]:** Input a name for your system on your own.
2. []: Scan the QR code on the DVR's Guide to get the Serial Number.
The Guide will pop up when you power on the DVR for the first time and you can find it on the DVR's quick menu. You can enter **[Main Menu]-[Advanced]-[Version]-[Serial Number]** to get the Serial Number and then input your Serial Number manually if you can not scan the QR code
3. **[User Name]:** admin
4. **[Password]:** The password is as same as the password of DVR (The default password **[null]** means you needn't input the password, just keep the password box blank).
 - e. Tap OK to add your device to the APP.
 - f. Whenever you open the Sannce Vision APP, the Device List window will be popped up for the first time. Tap the device you want to view, then you can get the video from all the connected cameras.





For more information,
please visit:

www.sannce.com



Shenzhen Kean Digital Co., Ltd.

ADD: 10th Floor, Rujun Building, NO. 105, The Center Road,
Bantian Street, Longgang District, Shenzhen, 518129, China

Web: <https://www.sannce.com>

Tech Support: support@sannce.com

Made in China



THEMIS AR support Ltd
85 Great Portland St, London, United Kingdom, W1W 7LT



THEMIS AR Unterstützung UG
Beedstrasse 54, In Dusseldorf, (40468), Deutschland

